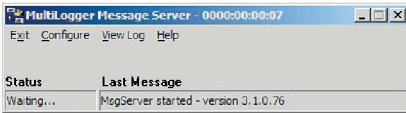


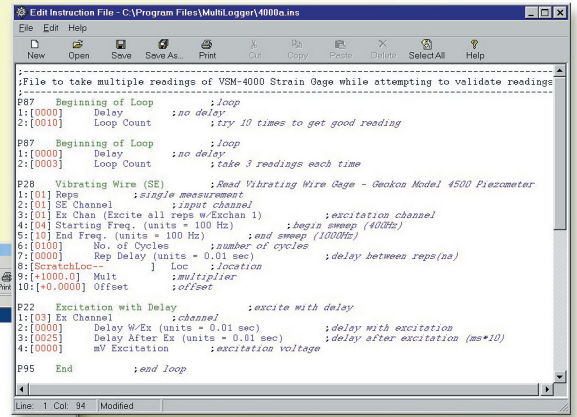
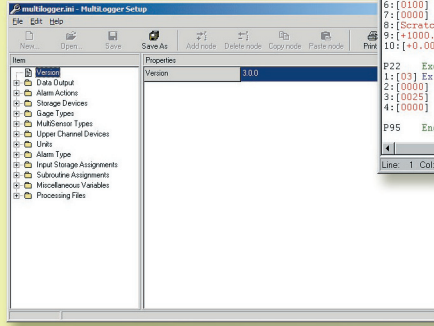
## Key Features

- MLGateway facilitates remote management of hardware
- Modify much of the functionality of MultiLogger using MLEditor
- Create custom programming using MLSetup
- Expand the functions of MultiLogger using MLSetup
- MsgServer provides notification via email, pagers, I/O cards and executables



▲ MultiLogger Message Server.

### ▼ Multilogger Setup.



▲ Program Editor: Edit Instruction File.

We have developed a number of support programs for modifying, enhancing or expanding on various capabilities of the MultiLogger and MultiLoggerDB software systems. These are as follows:

MLGateway is designed to allow MultiLogger to remotely manage networks of data acquisition hardware using LAN/WAN/Internet connectivity. MLGateway could be installed on a computer which has the data acquisition hardware, or network of hardware, attached. Remote computers can then access this hardware or network of hardware. This allows for multiple user access to the data acquisition hardware as well as utilization of low-cost Internet connectivity for remote management of systems.

MLEditor allows modification of the numerous programming options of MultiLogger. It is a prompting editor designed for the Campbell Scientific hardware. For example, entering programming instructions is done by typing the instruction number and then pressing <ENTER>, the instruction is inserted including formatting for entry of the various parameters. Help is available for all of the instructions for a given type of hardware as well as all of the instruction parameters.

MLSetup is designed to expand the numerous programming options of MultiLogger. For example, new gage types can be easily added using MLSetup, then the programming to support them is entered using MLEditor. Some of the programming options that can be expanded include the Data Output types, Alarm Actions, Storage Devices, Gage Types and Conversion Units.

MsgServer supports the various notification events that MultiLogger or MultiLoggerDB can generate. These include email messages (using SMTP), paging (using the TAP protocol), I/O ports (using a Keithley I/O card), and executables (any program residing on the host PC). It details all events in a comprehensive log which can be reviewed for trouble-shooting. Internet connectivity for email is supported using dial-up networking installed on the PC or via LAN/WAN.