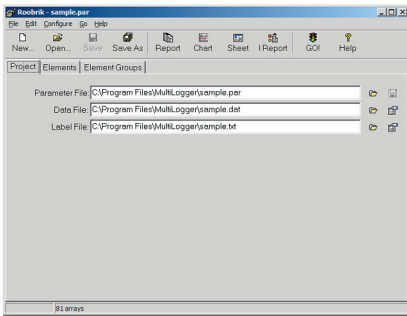


Key Features

- Designed to process ASCII data files in various formats
- Easily and quickly generate reports, charts and spreadsheets
- Specialized Instrument Report provides various measurement statistics
- Operation can be completely automated using command-line operation
- Calculations can be created to post-process the measurement data
- Very flexible filtering criteria to select specific ranges of data
- Data from non-MultiLogger generated sources can also be easily reduced
- Alarm values and trendlines can be automatically included on a chart



▲ Roobrik startup.

▲ Quick Chart Preview.

Time	Well 1	Well 2	Well 3	Well 4	Well 5	Well 6	Well 7	Well 8	Well 9	Well 10
7/31/1997 12:12:00	-0.12191	-0.1345	-0.01269	-0.10763	-0.01511	-0.01291	-0.00436	-0.00144	-0.02165	-0.01214
7/31/1997 12:13:00	-1.7361	-2.6655	-0.69297	-0.8447	-0.01441	-0.01917	-0.00436	-0.00134	-0.00955	-0.00713
7/31/1997 12:14:00	-6.4319	-6.7365	-2.3719	-2.6036	-0.05026	-0.01362	-0.00671	-0.00067	-0.1337	-0.1487
7/31/1997 12:15:00	-8.4436	-8.5163	-3.8103	-3.957	-0.04794	-0.01076	-0.00461	-0.00134	-0.21201	-0.21521
7/31/1997 12:16:00	-9.9152	-9.7987	-4.9034	-4.8656	-0.01645	-0.0065	-0.00293	-0.00116	-0.26276	-0.26368
7/31/1997 12:17:00	-10.415	-10.466	-5.692	-5.7655	-0.04306	-0.01022	-0.00436	-0.00024	-0.33023	-0.3453
7/31/1997 12:18:00	-11.003	-10.946	-6.271	-6.3108	-0.04514	-0.00601	-0.00333	-0.00177	-0.40439	-0.38844
7/31/1997 12:19:00	-11.407	-11.434	-6.7002	-6.7102	-0.01001	-0.00684	-0.00195	-0.00159	-0.44424	-0.4452
7/31/1997 12:20:00	-12.192	-12.163	-7.5129	-7.475	-0.0668	-0.01376	-0.00616	-0.00391	-0.57272	-0.56666
7/31/1997 12:21:00	-12.613	-12.601	-7.9422	-7.8762	-0.06992	-0.01279	-0.00627	-0.00391	-0.65567	-0.6721
7/31/1997 12:22:00	-13.641	-12.769	-8.2665	-8.1496	-0.03206	-0.00667	-0.00491	-0.00466	-0.71634	-0.7454
7/31/1997 12:23:00	-13.042	-12.96	-8.4032	-8.323	-0.02076	-0.00627	-0.00332	-0.00629	-0.76391	-0.81607
7/31/1997 12:24:00	-13.207	-13.1	-8.5525	-8.4768	-0.05594	-0.01199	-0.00754	-0.00464	-0.83652	-0.87035
7/31/1997 12:25:00	-13.339	-13.227	-8.675	-8.6208	-0.04715	-0.01126	-0.00684	-0.00171	-0.89236	-0.91925
7/31/1997 12:26:00	-13.447	-13.334	-8.7733	-8.7056	-0.01773	-0.00797	-0.0065	-0.0033	-0.9473	-0.96576
7/31/1997 12:27:00	-13.531	-13.525	-8.8664	-8.7978	-0.00455	-0.00992	-0.009	-0.00134	-0.98898	-1.0073
7/31/1997 12:28:00	-13.646	-13.529	-8.9488	-8.8626	-0.03476	-0.01224	-0.01175	-0.00268	-1.01693	-1.0425
7/31/1997 12:29:00	-13.721	-13.629	-9.024	-8.9673	-0.0372	-0.01022	-0.00943	-0.00159	-1.0582	-1.0824
7/31/1997 12:30:00	-13.818	-13.734	-9.0947	-9.0506	-0.01004	-0.00607	-0.00196	-0.00306	-1.105	-1.1167
7/31/1997 12:31:00	-13.903	-13.834	-9.1693	-9.1214	-0.00997	-0.0052	-0.01089	-0.00256	-1.1363	-1.1475
7/31/1997 12:32:00	-13.963	-13.869	-9.2251	-9.1836	-0.03696	-0.00693	-0.0079	-0.00146	-1.1622	-1.1729
7/31/1997 12:33:00	-14.006	-13.993	-9.2779	-9.2311	-0.03427	-0.00667	-0.00772	-0.00269	-1.1963	-1.2075
7/31/1997 12:34:00	-14.06	-14.033	-9.3286	-9.2828	-0.00695	-0.01144	-0.00696	-0.00065	-1.2366	-1.253
7/31/1997 12:35:00	-14.112	-13.997	-9.3793	-9.3361	-0.00455	-0.0065	-0.00025	-0.00006	-1.2577	-1.2618
7/31/1997 12:36:00	-14.157	-14.059	-9.4184	-9.3787	-0.02697	-0.00888	-0.00815	-0.00153	-1.2908	-1.2965
7/31/1997 12:37:00	-14.246	-14.237	-9.5975	-9.5519	-0.00748	-0.00696	-0.00684	-0.00116	-1.4109	-1.4067
7/31/1997 12:38:00	-14.48	-14.412	-9.7256	-9.6867	-0.00566	-0.01199	-0.00491	-0.00267	-1.4599	-1.4592
7/31/1997 12:39:00	-14.593	-14.497	-9.8391	-9.7831	-0.00723	-0.01614	-0.00961	-0.0033	-1.5661	-1.5662
7/31/1997 12:40:00	-14.71	-14.598	-9.9452	-9.8912	-0.01291	-0.01431	-0.01083	-0.00256	-1.6495	-1.6648
7/31/1997 12:41:00	-14.802	-14.679	-10.026	-9.9903	-0.02121	-0.01614	-0.0101	-0.00092	-1.7064	-1.7307
7/31/1997 12:42:00	-14.859	-14.626	-10.121	-10.075	-0.0169	-0.02092	-0.00882	-0.00691	-1.7761	-1.8134

Roobrik is supplied with MultiLogger to provide data reduction for collected data, stored in ASCII files, whether tab, comma or space delimited format. It is a powerful data reduction program, designed to handle data files of any size and any number of elements (limited by physical memory and disk space) and easily and quickly output columnar reports, charts and spreadsheets. Label files (to provide descriptions for the elements in the arrays of data) supported include the MultiLogger .LOC format, Generic .TXT and Campbell Scientific .FSL format.

Two types of reports can be output by Roobrik, standard columnar reports and instrument reports. The columnar reports, or Quick Reports, provide a way to present a tabulated listed of instrument measurements, whereas Instrument Reports provide a way to present various statistical parameters for the data, e.g. maximum or minimum values, last valid reading, number of readings, or sum, among others.

The Quick Chart charting tool is very powerful, with over 20 chart types supported as well as extensive customization. Specialized chart types are also supported, such as Time Series (where measurements are averaged over an interval and plotted versus reference values) and Inclinometer. In addition, if alarms are configured for specific channels the alarm values can be depicted on the chart. Trendlines, including linear, logarithmic and up 5th order polynomial types can be automatically calculated and displayed on the chart.

The spreadsheet output will process data and export it directly to an Excel worksheet (you must have Microsoft® Excel® installed to use this feature). The various output types of Excel can be used to create files in any number of formats, including HTML. Calculations can be configured and the values in the data file processed before being sent to the desired output.