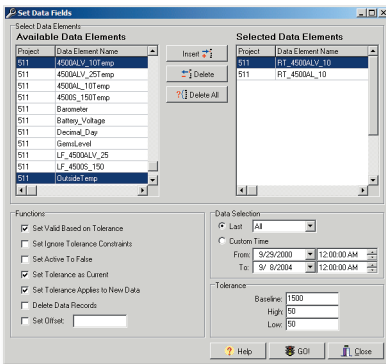
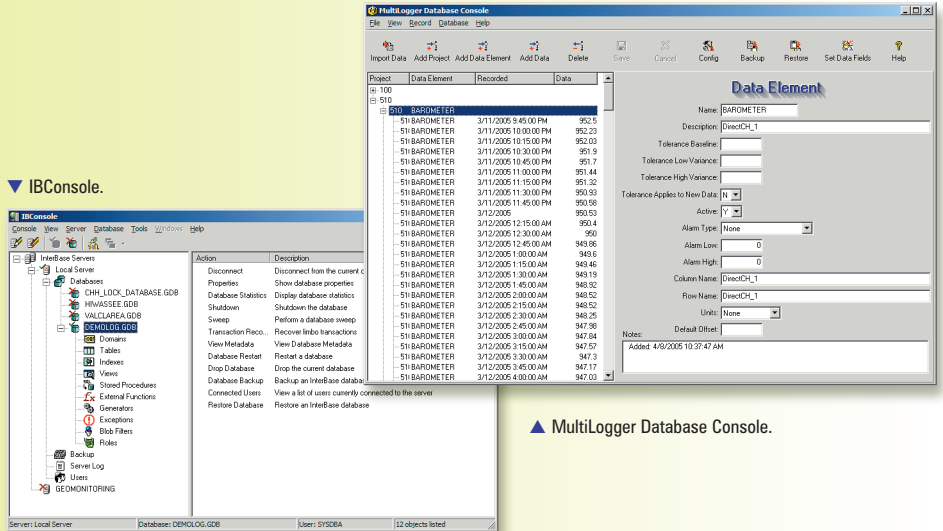


Key Features

- Share data concurrently across a variety of networks using SQL database technology
- Automated import of data when collected using the MultiLogger Agent
- COM automation provides interface to other applications
- Easily create new Project, Data Element or Data records manually or automatically
- Extensive field editing functions with Set Data Fields form
- Provides grid or tree-based viewing of the database structure
- Includes maintenance functions such as database backup and restore
- Includes third-party database management software IBConsole
- Provides automated validation of data using tolerance fields



▲ Set Data Fields.



▲ MultiLogger Database Console.

MultiLoggerDB expands the basic functionality of the MultiLogger software by integrating SQL (Structured Query Language) database technology for storage and retrieval of data. Data collected using MultiLogger may be imported automatically or manually into the database, once in the database it may be shared concurrently across a Local Area Network (LAN), Wide Area Network (WAN) or the Internet. When importing data the system configuration is retrieved automatically by MultiLoggerDB, this includes channel labeling, alarm types and values, this is then used to automatically create database structure to match the collected data. For systems programmed using MultiLogger there is no additional configuration necessary to load the data into the database, apart from simply selecting the data file that has been collected from the system. In addition, manually recorded data or data from other electronic devices may be easily imported automatically or manually, to allow consolidating all data for a given project into a single data repository.

The Database Console allows you to manage your project, you will *not* need to have detailed knowledge of

SQL to effectively use MultiLoggerDB. For example, the Set Data Fields form allows configuration of specific database fields for one or more Data Elements over a user-configurable data range. For example, validation criteria can be specified to apply for a given date range to a given group of Data Elements; no SQL programming is required, just configure the form options and execute. Also included in the Database Console are important maintenance functions such as backing up and restoring the database.

IBConsole, a third-party software tool included with MultiLoggerDB, provides more advanced database management tools, including the ability to easily manage multiple databases in multiple locations, configure security including creating users and managing passwords, statistical reporting, transaction viewing, script execution and more detailed management of the database structure, including review of the various tables and underlying SQL programming. Currently MultiLoggerDB supports the Interbase and Firebird SQL database servers, others, including Microsoft® SQL Server, can also be supported, contact Canary Systems for more information.