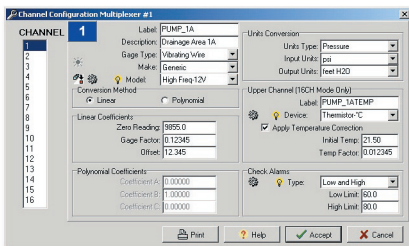


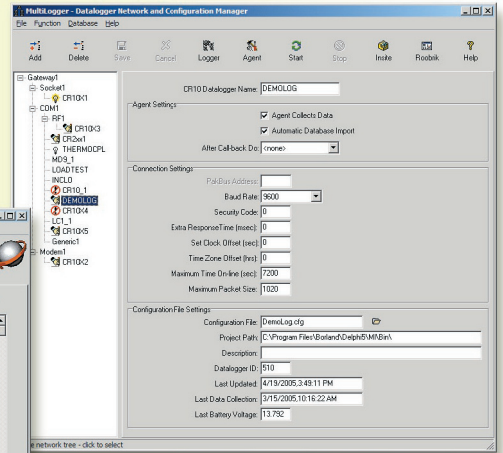
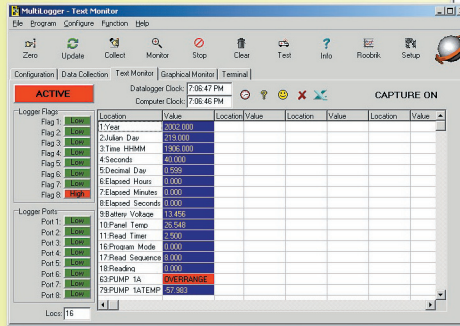
Key Features

- Native 32-bit application designed for Windows 95/98/ME/NT/2000/XP
- Manages Local as well as Remote configurations of data acquisition hardware
- Uses Windows functionality for modems (TAPI) and network devices (TCP/IP Winsock)
- Designed for the Campbell Scientific Measurement and Control Units (MCU's)
- Supports all Campbell Scientific communication peripherals
- Supports other communication peripherals using Generic Modem device
- Automates collection of data from all systems using a Collection Agent
- Completely automated program generation
- Special program modes such as Zero and Test to help with installation
- Text and graphical monitoring modes



▲ Channel Configuration.

Text Monitor.



▲ Datalogger Network and Configuration Manager.

MultiLogger provides a number of important functions related to data acquisition hardware, including network management, program automation, monitoring and data collection. Originally designed to support Campbell Scientific data acquisition hardware, it is being expanded to support hardware from other manufacturers. It is currently deployed at over 400 projects worldwide, and is available in numerous languages including German, Italian and Russian, with others in development.

The Network Configuration allows development of simple or complex networks of data acquisition hardware. These networks can consist of Local or Remote Gateways, which are PC's to which data acquisition hardware is attached, different types of ports such as phone modem, COM, and TCP/IP are supported, in addition all Campbell Scientific communication peripherals are supported including the MD-9/MD-485 and RF devices, in addition to numerous types of Campbell Scientific MCU's including the CR500/510, CR10/10X, CR7/21, CR23X, CR2XX and CR1000. Additional communication devices can be supported using the Generic Modem device. Tasks can also be configured in the Network to execute external programs and/or processes in response to call-back events.

MultiLogger is designed to automate the programming of the Campbell Scientific MCU's, no datalogger programming knowledge is required! System operation is configured via a series of form options; the program is automatically generated based on the user selections. This includes such options as measurement intervals, multiplexer (multiplexers from a variety of manufacturers are supported) and channel configuration, alarm checking and alarm actions. Advanced configurations are also supported and many system programming options are user-configurable.

Numerous communications functions are supported, including program download, text and graphical monitoring, and data collection. A terminal emulator is also available to facilitate direct communication for troubleshooting and/or testing. Data collection can be completely automated using the Collection Agent, status icons display to indicate the data collection status. Various types of notification methods are also supported, so that email messages can be sent based on data reviewed during data collection.