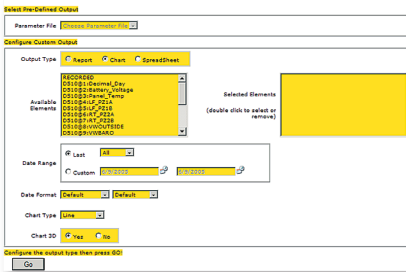
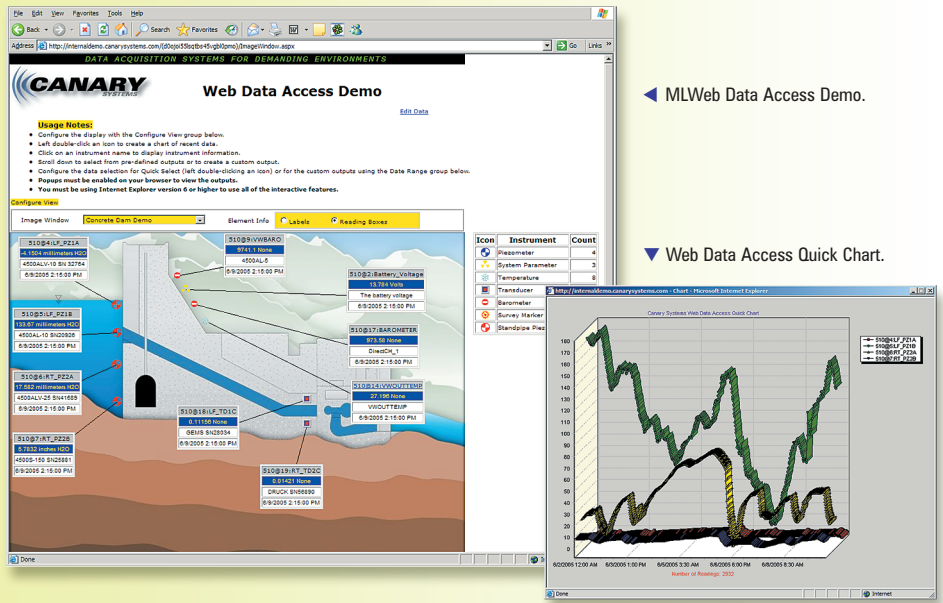


Key Features

- Provides Web data access to the MultiLoggerDB database
- Does not require custom site development or programming
- Image Window interface configured using Insite
- Pre-configured outputs created using Insite
- Password protected content using secure SQL technology
- Variety of database platforms are supported
- Uses standard Microsoft® .NET® web technology



▲ Custom output configuration.



◀ MLWeb Data Access Demo.

▼ Web Data Access Quick Chart.

MLWeb represents the latest advancement of our software system, it essentially consists of “bridging” software that interfaces the latest .NET web functionality from Microsoft with our MultiLoggerDB system. This provides a way for the end-users to manage their systems using MultiLogger, to automate the collection of data using the Agent feature and then to create and manage the database project using our standard MultiLoggerDB software components, including the Database Console and Insite. Deployment of this system requires a Microsoft 2003 Server® (other OS versions are supported, contact Canary Systems for details) with the latest .NET library installed and an appropriate infrastructure for web accessibility, including a firewall, router and high-speed connectivity (384K DSL is the recommended minimum). We can provide hosting services or assist with deploying the needed equipment at your project site.

The primary interface to the project database is through the use of “Image Windows”, these are graphics of the project (schematics, photos or engineering drawings) onto which icons are placed to denote instrument locations. The Image Windows are configured using Insite; this includes loading one or more graphics

into the database, adding icons to the views and then connecting the icons to data or calculated elements stored in the database. MLWeb then renders these Image Windows in your Internet Explorer® browser while showing current readings and other information associated with the icons. You may double-click on the icons to run the pre-configured output associated with the icon. Outputs are configured and stored in the database using Insite.

MLWeb supports all of the standard outputs of Insite, these include Quick Reports, for presenting data in columnar format, Quick Charts, for creating charts of data or calculated values, Spreadsheets, for output of values to an Excel worksheet (Microsoft Excel® must be installed on the machine for this function to work), and Instrument Reports, which provide statistical data regarding the data or calculated elements. In addition to the pre-configured outputs you also have the flexibility of creating custom outputs, all outputs with the exception of the Instrument Report are supported using the MLWeb interface.

See a working demonstration of this system by visiting: www.geomonitoring.com!