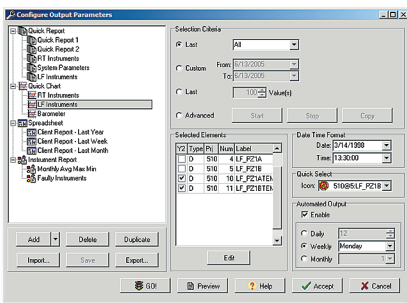
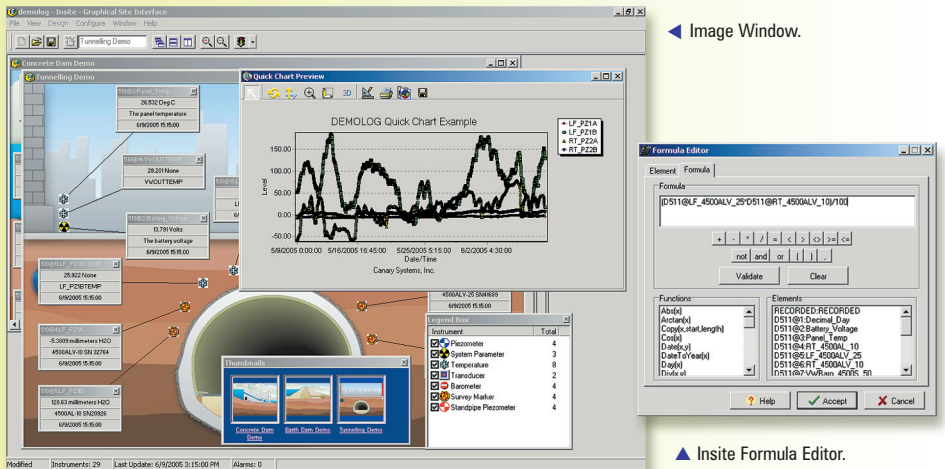


## Key Features

- Designed to connect to databases in a variety of network topologies
- Supports multiple-users with multiple network topologies
- Presents the project as a series of image windows with icons to show instruments
- Pre-defined outputs can be associated with any instrument icon
- Very flexible output options including reports, charts and spreadsheets
- Completely automated output generation with scheduling
- Full complement of mathematical functions for developing calculations
- Real-time monitoring with alarm monitoring and notification
- Trendlines using Log, Linear or Polynomial methods are easily added to any Quick Chart output
- Designed to configure the project for Internet data access



▲ Configure Output Parameters.



◀ Image Window.

▲ Insite Formula Editor.

**Insite** is designed as the primary data access client software, it includes many of the data reduction and output capabilities of Roobrik, with additional features specific to the database version. These include the ability to present a project as a series of "Image Windows", these are graphics of the project (schematics, photos or engineering drawings) onto which icons are placed to denote instrument locations, the ability to monitor the database and provide feedback regarding current values, the ability to signal alarm conditions and provide various types of notification, the ability to program into the database any number of outputs and the ability to associate these outputs with instrument icons and schedule their creation. In addition, Insite provides key functionality for deploying MLWeb, our web data access system.

In addition to providing an interface to data elements Insite also provides the ability to develop calculations. This provides a way to develop other numerical outputs based on the measurement data, e.g. a barometric measurement may be used to provide barometric correction to one or more water level measurements, or stress in a particular direction may be calculated using the three measurement values from an over-core stress cell. The calculated elements can also be used in similar ways as the data elements, e.g. they can be associated with an icon on an Image Window to provide feedback

regarding current values, alarms can be configured and notification events triggered based on updates to the data in the database and they can be selected for inclusion on any of the four types of outputs that Insite can generate.

Numerous output types are supported in Insite, these include Quick Reports, Quick Charts, for creating charts of data or calculated values, Spreadsheets, for output of values to an Excel worksheet (Microsoft® Excel® must be installed on the machine for this function to work), and Instrument Reports, which provide statistical data regarding the data or calculated elements. Each of these outputs is highly configurable, particularly the Quick Chart output, an additional Chart Editor is included to provide for advanced customizations. Insite can also generate Quick Charts of Dynamic Events, these are records of data captured using high-speed data acquisition equipment.

All output configurations are stored in the database, these can be associated with an icon to create the specified output by double-clicking on the icon, or they may be selected from the list of available outputs. Changes to the output definitions stored in the database are limited to those with Design Mode password access. These outputs may also be scheduled to run automatically at monthly, weekly or daily intervals.