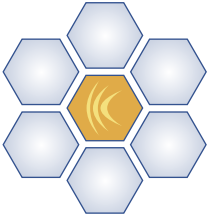


# ***CANARY SOFTWARE***

***INTEGRATED  
SOFTWARE  
SOLUTIONS***



# CANARY SOFTWARE

Canary Systems Integrated Software Solutions

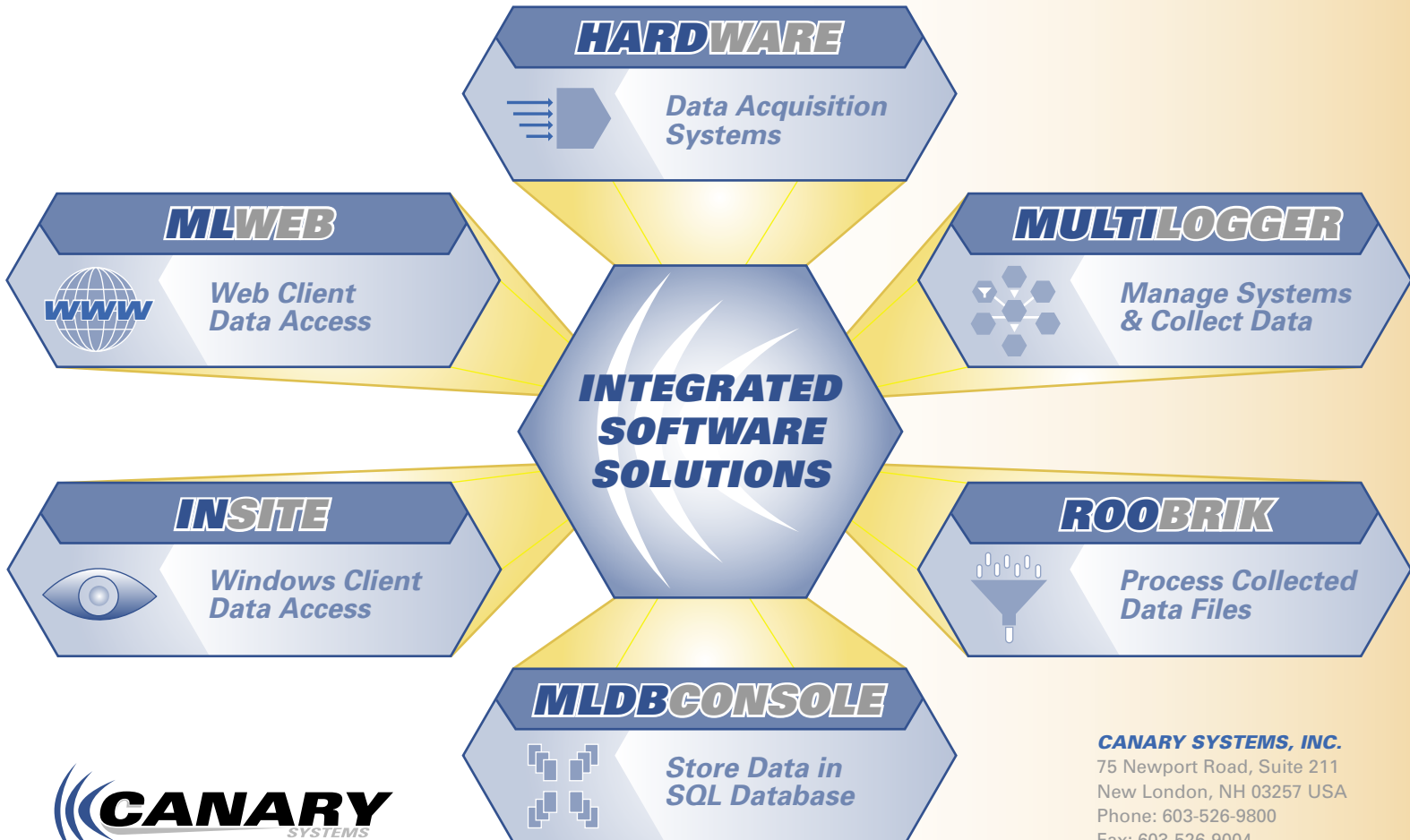


Canary Systems MLWeb

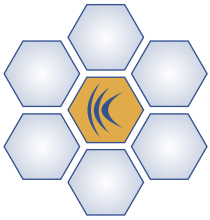
One of the key components to deliver the value of the investment in your monitoring system is the software to make it all work. With decades of collective experience working with instrumentation and systems of many types deployed at hundreds of projects world-wide we have the experience to understand how the software should work to maximize this value. We develop in-house all of the software we sell, with the exception of the Firebird SQL database server, and are continually enhancing it to provide better value with each new version. We also understand that it isn't just about developing world-class software, but providing support after the sale that further enhances the value of your investment. We stand behind our work and look forward to helping you with your monitoring systems and software!

Visit [www.CanarySystems.com](http://www.CanarySystems.com) to find out more and download demo software.

## CANARY SYSTEMS SOFTWARE INTEGRATION



**CANARY SYSTEMS, INC.**  
75 Newport Road, Suite 211  
New London, NH 03257 USA  
Phone: 603-526-9800  
Fax: 603-526-9004  
Email: [info@canarysystems.com](mailto:info@canarysystems.com)



# MULTILOGGER

*MultiLogger Provides for Network Management Including Automated Programming and Data Collection*



## FEATURES

- Provides automated programming and network management
- Supports local and remote configurations of hardware
- Supports multi-user network and system access
- Password protection limits changes to authorized personnel
- Uses Windows functionality for modems (TAPI) and network devices (TCP/IP Winsock)
- Supports all popular Campbell Measurement and Control Units (MCU's)
- Supports virtually all commercially available communication devices
- Automates data collection from all configured systems
- Automates data import when using the database system
- Includes text and graphical monitoring modes

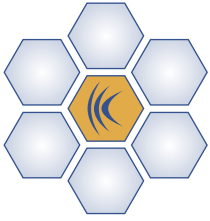
MultiLogger is a Windows application designed to manage the automatic data acquisition systems (ADAS), this includes automating programming if necessary and automating data collection. The systems may be connected directly to the PC running MultiLogger or connected using numerous types of communication equipment including short-haul modems, phone modems, radios, fiber-optic or Ethernet interfaces. Virtually all communication devices currently on the market are supported. It supports ADAS gear from Campbell Scientific as well as other manufacturers. Support for Campbell Scientific gear includes complete program automation based on user selected options such as scan interval, channel configurations, data storage option and alarm action. Channel configuration options include support for instruments directly connected to the wiring panels and those connected using multiplexers (units from numerous manufacturers supported). Each channel may be configured for gage type I make I model, including conversion factors, units conversion and alarm limits. Temperature devices may be read as well. Supported Campbell Measurement and Control Modules (MCU's) include the CR500/510, CR10/10X, CR7/21, CR23X, CR2xx, CR800 and CR1000.

### CANARY SYSTEMS, INC.

75 Newport Road, Suite 211  
 New London, NH 03257 USA  
 Phone: 603-526-9800  
 Fax: 603-526-9004  
 Email: info@canarysystems.com



Flag	Location	Value	Location	Value	Location	Value	Location
1:Logger_ID	100.0000000						
2:Year	2009.0000000						
3:Julian_Day	19.0000000						
4:Time_HHMM	1905.0000000						
5:Seconds	0.0000000						
6:Decimal_Day	0.0514583						
7:Elapsed_Hours	0.0000000						
8:Elapsed_Minutes	0.0000000						
9:Elapsed_Seconds	0.0000000						
10:Battery_Volts	15.2002940						
11:Panel_Temp	21.8083229						
47:DirectCH_1	0.3297868						
48:DirectCH_2	0.3291054						
49:DirectCH_3	0.3291054						



# ROOBRIK

Powerful Data Reduction and Charting Tool Supports over 20 Different Chart Types



## FEATURES

- Designed to process ASCII data files in various formats
- Easily and quickly processes data and generates reports, charts and spreadsheets
- Very flexible filtering criteria to select data based on date ranges, logical tests or calculation results
- Powerful charting tool supports over 20 different chart types and can include alarm values and trendlines
- Spreadsheet automation supports loading specific workbooks, running macros and exporting using Excel output formats
- Instrument report provides various measurement statistics such as maximums, minimums and averages
- Calculations can be created to post-process the measurement data
- Calculation engine supports over 60 functions including aggregate and historical functions
- Operation can be completely automated using command-line operation

Roobrik is included with MultiLogger and is designed to reduce the collected data files. It is commonly used for installations where the database system is not utilized and you need local report, chart or spreadsheet generation. It can process tab, space or comma delimited files of practically any size, limited only by available memory and disk space. Supported location files, or data description files, include those generated by MultiLogger, Campbells .fsl format and a generic .txt format. Calculated elements can also be created and output with the raw data. Outputs include 2 types of columnar reports, charts and spreadsheets. Columnar reports provide for tabular presentation of data, including statistical presentation such as average, maximum and minimum. The charting support is very powerful with over 20 basic chart types and extensive functionality including automated generation of trendlines and presentation of alarm limits. The spreadsheet output (Microsoft Excel is required) will directly create an Excel worksheet and populate it with data. Command line parameters provide for complete automation of Roobrik.

### CANARY SYSTEMS, INC.

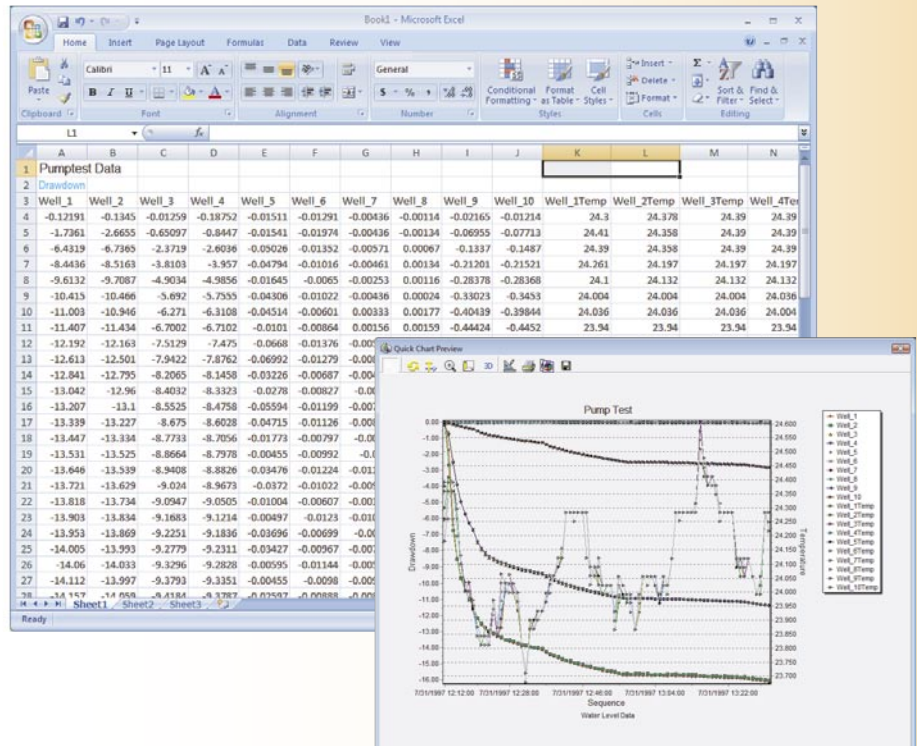
75 Newport Road, Suite 211

New London, NH 03257 USA

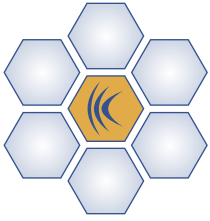
Phone: 603-526-9800

Fax: 603-526-9004

Email: info@canarysystems.com

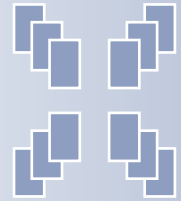






# MLDBCONSOLE

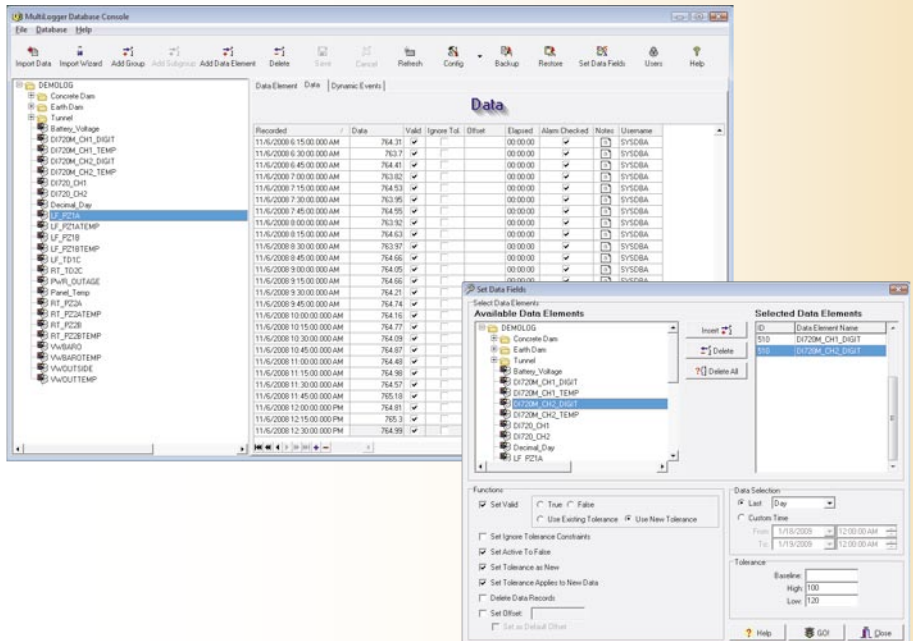
*MLDBConsole Provides Extensive Database Management Functions Including Data Import, Database Organization, Auditing and Security Configuration*



## FEATURES

- Provides secure database management functions for local or remote databases
- Import Wizard creates import definitions for importing data from a variety of files
- Easily organize data elements in logical groupings using Group View
- Allows viewing and editing of static or dynamic data records
- Supports manually adding new groups, data elements and data
- Allows configuration of tolerance settings to auto-validate data
- Extensive field editing functions with Set Data Fields form
- Provides database security with 4 user types and access levels
- Includes maintenance functions such as database backup and restore
- Track data changes using audit tracking and reporting

The ML Database Console, or MLDBConsole, is a Windows application that is one of two applications we develop for supporting database organization, archiving and data access. MLDBConsole is the management console. It provides for creating the database, managing the Groups and Data Elements stored, backup and restore of the database and configuring user logins. MultiLogger utilizes MLDBConsole via command-line parameters to automatically import data collected from the ADAS network. When used by MultiLogger additional information regarding the data is automatically imported including channel labeling, units conversions and alarm types and values. It also includes an import wizard to provide for importing data files from virtually any source, whether collected from an automated system or extracted from other sources such as worksheet exports. To insure the highest quality data used for alarms and outputs, MLDBConsole provides for configuring tolerance limits for each Data Element. The database server utilized is the open-source Firebird SQL Server which provides for secure, highly reliable data archiving. No SQL programming expertise is required to utilize this powerful database system. The database may be accessed over Local Area Network (LAN) or Wide Area Network (WAN). Contact Canary Systems for support of other database platforms.



### CANARY SYSTEMS, INC.

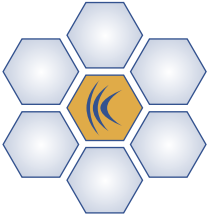
75 Newport Road, Suite 211  
New London, NH 03257 USA

Phone: 603-526-9800

Fax: 603-526-9004

Email: info@canarysystems.com





# INSITE

*Insite provides viewing of the project database including status of current measurements, creation of various data outputs and notification configuration*



## FEATURES

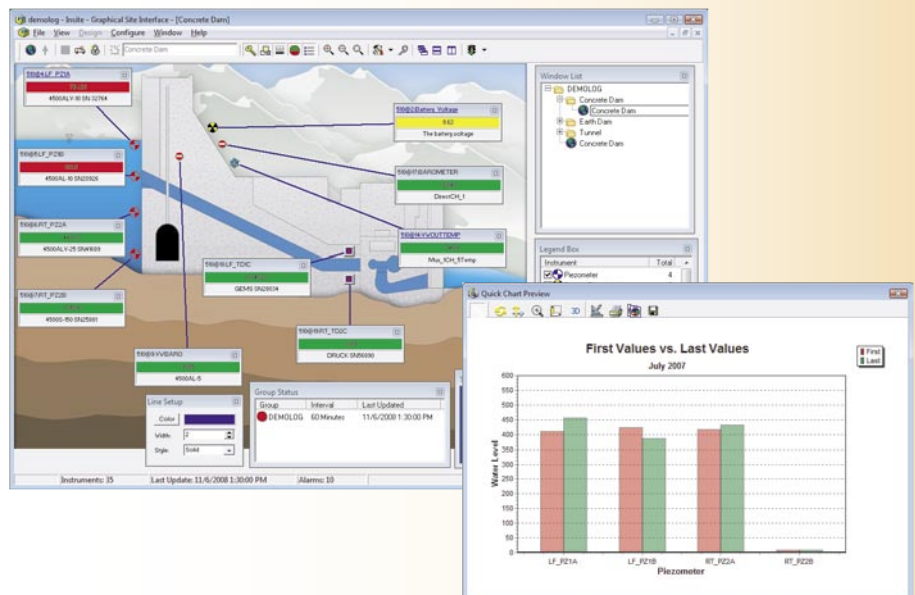
- Presents the project as a series of graphical views with icons to show instruments locations
- Provides data monitoring including alarm status and notification
- Supports multiple-users accessing local or remote databases
- Easily and quickly processes data and generates reports, charts and spreadsheets
- Very flexible filtering criteria to select data based on date ranges, logical tests or calculation results
- Calculations can be created and stored in the database to post-process the measurement data
- Calculation engine supports over 60 functions including aggregate and historical functions
- Powerful charting tool supports over 20 different chart types and can include alarm values and trendlines
- Element chart presents series data comprised of several data or calculated elements, such as borehole deformation plotting
- Provides notification configuration for alarms, events and automated outputs

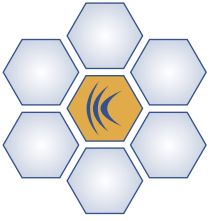
### CANARY SYSTEMS, INC.

75 Newport Road, Suite 211  
 New London, NH 03257 USA  
 Phone: 603-526-9800  
 Fax: 603-526-9004  
 Email: info@canarysystems.com



Insite is the second of the Windows applications that we develop to support SQL database client data access. It presents the project as a series of views, i.e. graphics, with instrument locations denoted by icons placed on the views. The icons show current measurements including alarm status and provide for quickly generating its associated output type, whether report, chart or spreadsheet. Insite includes support for two report types, a columnar report for basic data presentation and a second type for presenting statistical information regarding the data. The charting tool is very powerful with support for over 20 basic chart types and extensive functionality including automated generation of trendlines and presentation of alarm limits. Insite also includes a second charting tool which provides for presenting data where each series is comprised of one or more data or calculated elements, e.g. horizontal or vertical deflection profiles, or comparing maximum/minimum values in the database to the current values. The spreadsheet output (Microsoft Excel is required) will directly create an Excel worksheet and populate it with data. Calculated elements which are derived from data elements or other calculated elements may be created and stored in the database and used in a similar manner as data elements, e.g. shown on the views, included in the outputs and used to trigger alarms. Database alarms and notification are also configured using Insite, these include five basic types of alarms and notification.





# MLWEB

MLWeb provides web data access to the project database using secure SQL technology built on Microsofts Internet Information Services (IIS)



## FEATURES

- Provides Web data access to the MultiLoggerDB project database
- Requires no custom web programming or site development
- Presents project as series of graphical views with icons showing instrument locations and current measurements
- Project configuration is organized using Insite
- View current measurement status including alarms
- All pre-configured outputs configured using Insite are accessible through MLWeb
- Password protected content using secure SQL technology
- Utilizes standard Microsoft .NET web technology
- Includes pages for viewing all events including alarms and notifications
- Provides several data viewing and data entry forms

### CANARY SYSTEMS, INC.

75 Newport Road, Suite 211

New London, NH 03257 USA

Phone: 603-526-9800

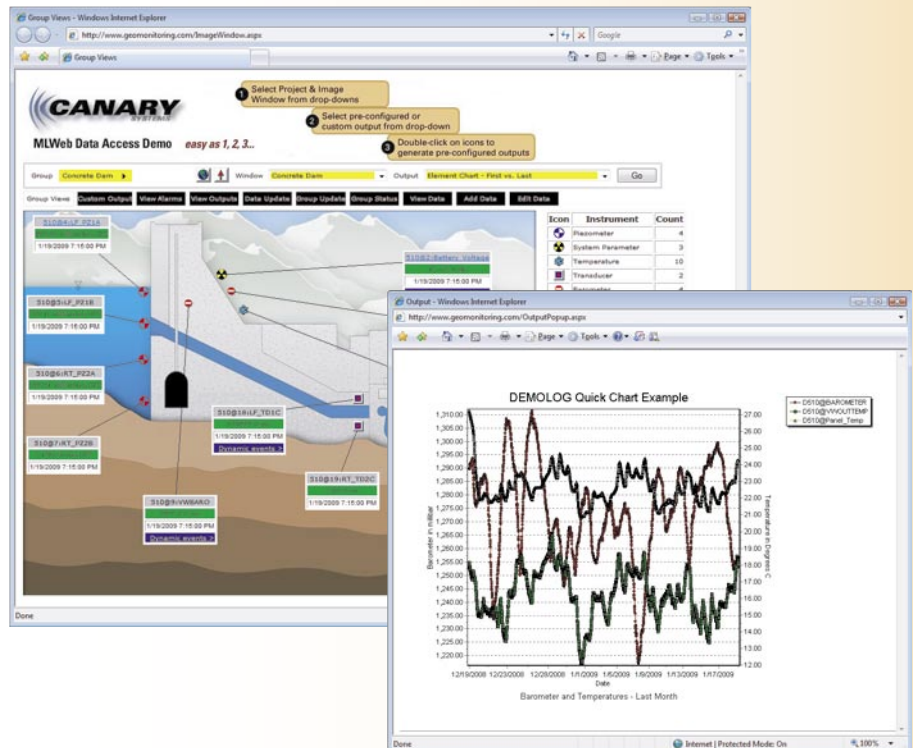
Fax: 603-526-9004

Email: info@canarysystems.com



MLWeb provides for viewing the project database via the Internet. It is designed to run under Microsoft's® Internet Information Services (IIS) platform which is included with many Windows operating systems including WinXP Professional, Windows Server 2003 and 2008 and Vista Business. It presents the views that have been configured using Insite, including instrument locations, alarm status and quick access to the associated output. It is compatible with all popular browsers including Microsoft Internet Explorer, Mozilla Firefox® and Apple Safari. For hand-held devices which support browsers, such as Apples iPhone, MLWeb provides for viewing the project database, including generation of reports and charts, from remote locations. MLWeb also includes data entry forms that provide for viewing, entering and modifying data stored in the database. Sites are password protected with security configured using MLDBConsole. Users may be configured for viewing the project as guests or they may be given access to specific data elements for data entry using their browser. With MLWeb your Internet based data access system is quickly and easily deployed, without any custom web programming!

Visit [www.GeoMonitoring.com](http://www.GeoMonitoring.com) to see a working demo of all our software technologies.





***CANARY SYSTEMS, INC.***

75 Newport Road, Suite 211  
New London, NH 03257 USA

Phone: 603-526-9800

Fax: 603-526-9004

[www.canarysystems.com](http://www.canarysystems.com)