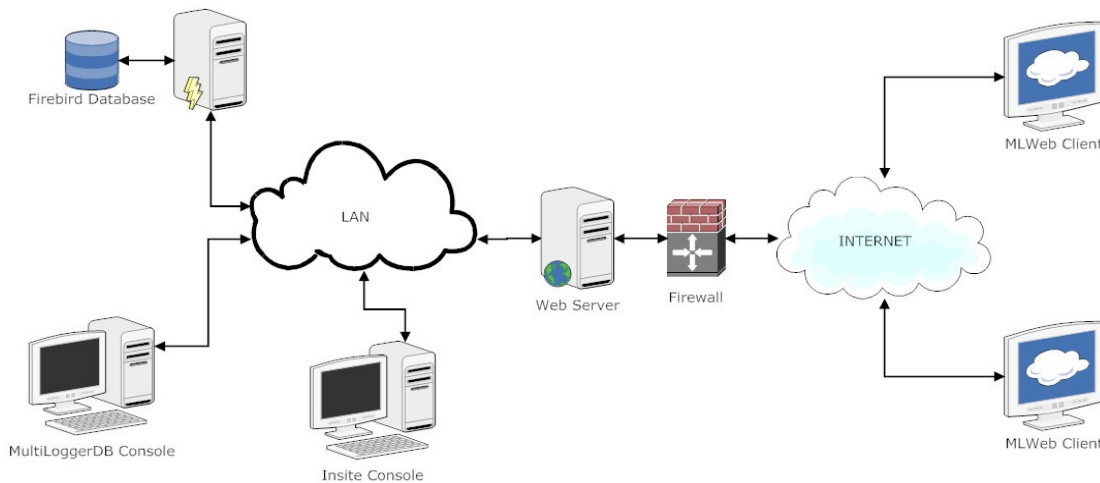


MultiLogger Suite Demo Database Installation

The MultiLogger Suite CD now includes a demonstration database for use with **MLDBConsole**, **Insite** and **MLWeb** that provides a working demonstration of the database components. The database system provides a multi-user database platform for sharing data, providing a project interface including tools for manually or automatically generating outputs and alerting users to alarm conditions. A typical deployment including MLWeb is shown below.



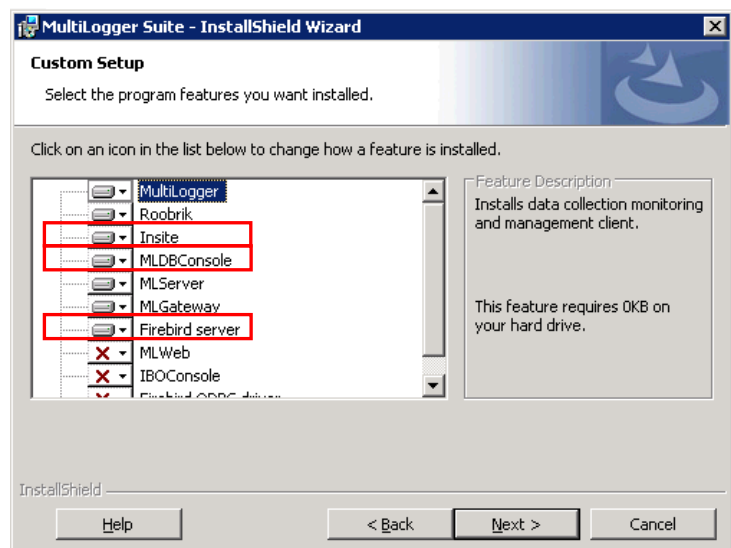
This document will detail how to install and use **MLDBConsole** and **Insite**, the database client tools, to view the sample project database included with the MultiLogger Suite software.

The 2-step installation is very straight-forward:

1. Copy the \Demolog folder from the installation media to your local hard drive. Within this folder is found the **DEMOLOG.GDB** sample database file.
2. Install **Firbird Server**, **Insite** and **MLDBConsole**. These are normally installed during the MultiLogger Suite installation.

You can check whether they are installed by running the installer, selecting **Custom** installation and viewing the applications currently installed or to be installed.

Make sure Insite, MLDBConsole and Firebird Server are installed or selected to be installed.

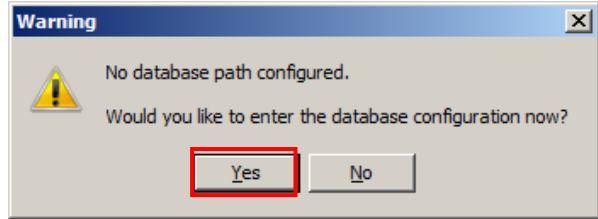


Launching MLDBConsole and Configuring the Database

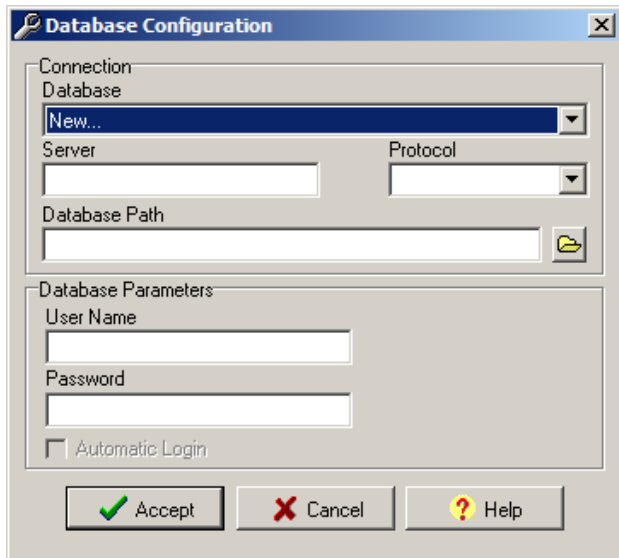
Note the **MLDBConsole** and **Insite** shortcuts on your desktop. Double-click the **MLDBConsole** shortcut. The shortcut is also found in the **Programs | MultiLogger Suite** group.

When first launching **MLDBConsole** you will be required to configure a database path.

Click **Yes** to display the Database Configuration form.



Initially the form will be blank.



Fill out the form as shown:

Database: **New...**

Server: **localhost**

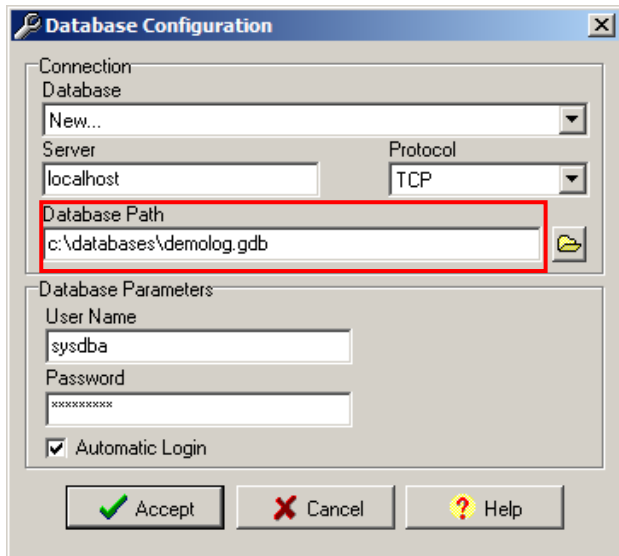
Protocol: **TCP**

Database Path: **Be sure to match the Database Path to the actual path where the Demolog.GDB file is found.** The File Browse button may be used to open a file browse dialog to locate the file by browsing the drives.

User Name: **sysdba**

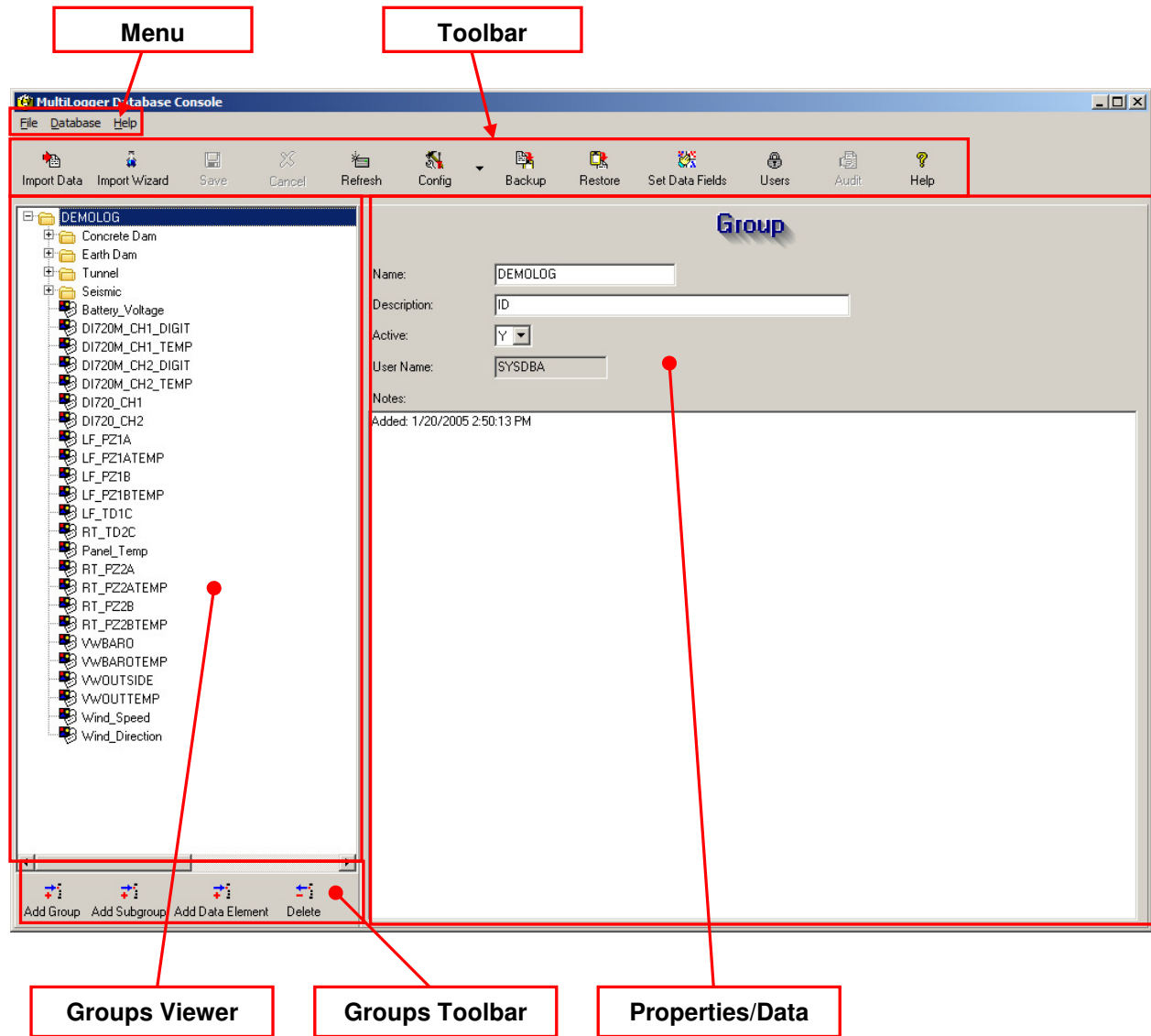
Password: **masterkey**

Press **Accept** when finished to load the DEMOLOG.GDB database into MLDBConsole.



MLDBConsole will launch and display the Groups View of database elements.

MLDBConsole has several functions related to managing and administering the database including organizing the Groups, Backup and Restore functions, managing Data Element, and Data records, configuring Users and Audit reporting.



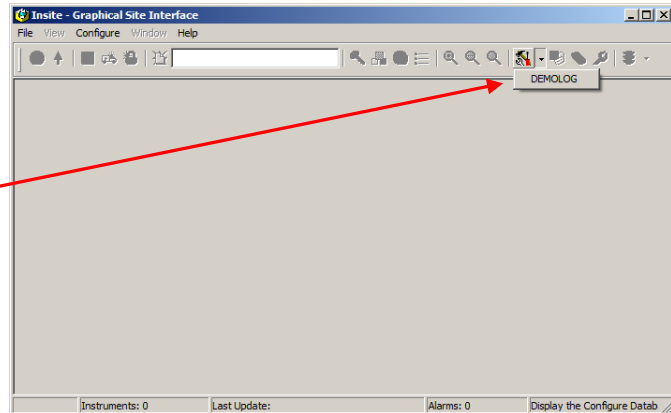
See the **MLDBConsole User's Guide** found in the \documentation folder of the installation media for complete information on **MLDBConsole**.

To close **MLDBConsole** use the menu option **File | Exit** or click in the upper right corner. The last database loaded will be used as the default at the next launch so the Demolog database will load automatically the next time **MLDBConsole** is launched.

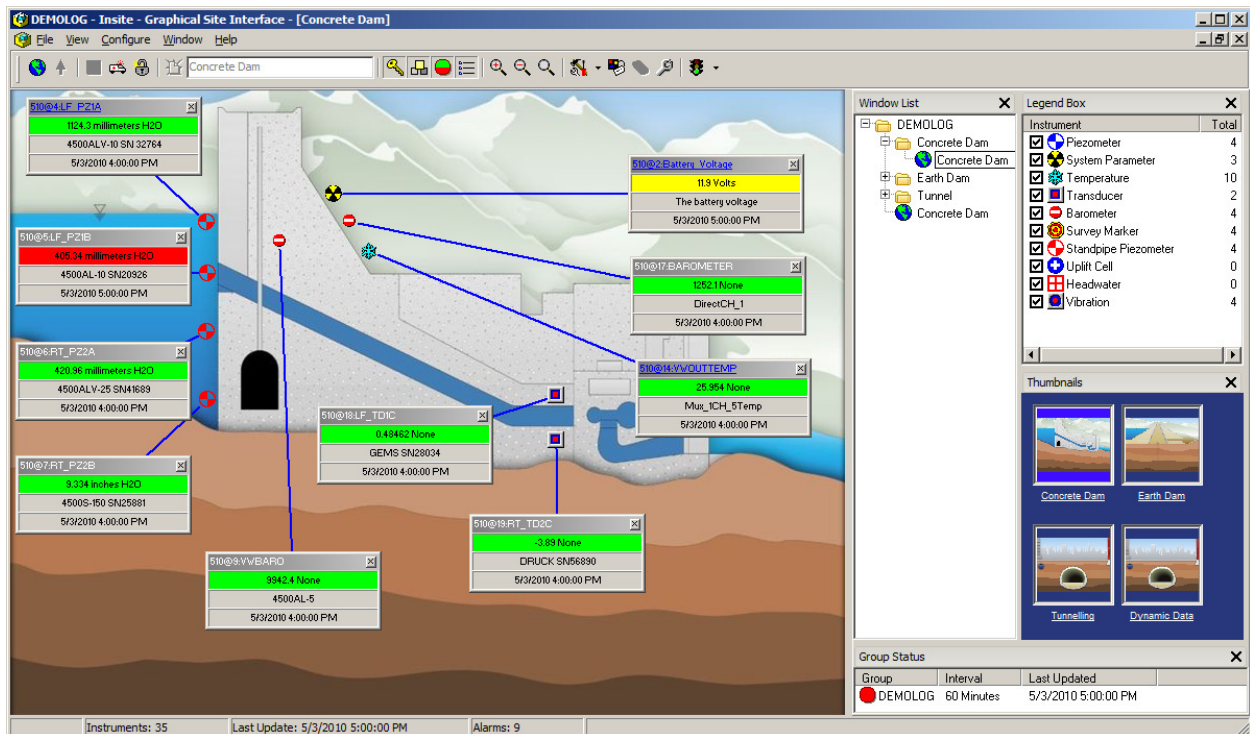
Launching Insite

Double-click the **Insite** shortcut on your desktop to launch Insite. The shortcut is also found in the **Programs | MultiLogger Suite** group.

When **Insite** first launches no database is selected so a blank interface is shown. Click on the drop-down option of the Configure Database and select the DEMOLOG database. You should see the DEMOLOG database shown if the configuration steps in the preceding section for **MLDBConsole** were followed.



Once the database is selected Insite will load it. **Insite** has several functions related to managing and administering the project including organizing the Views, creating Outputs, configuring Notifications and interactive features to view the project and create outputs.



See the **Insite User's Guide** found in the \documentation folder of the installation media for complete information on **Insite**.

To close **Insite** use the menu option **File | Exit** or click in the upper right corner. The last database loaded will be used as the default at the next launch so the Demolog database will load automatically the next time **Insite** is launched.