

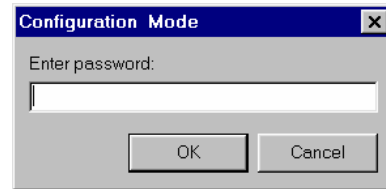


75 Newport Road, Suite 211
New London, NH 03257
Voice: (603) 526-9088
Fax: (603) 526-9004
info@canarysystems.com
www.canarysystems.com

I Have Updated to MultiLogger v2.0.5+ Now I Can't Configure My Loggers?

Frequently Asked Question #7

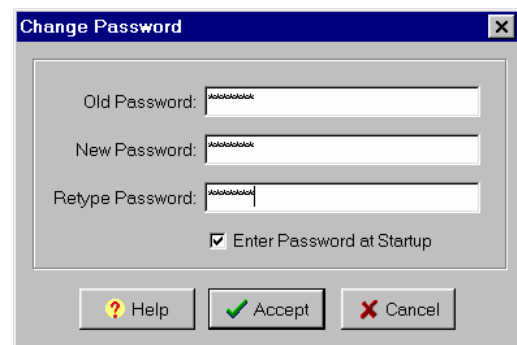
Beginning with MultiLogger version 2.0.5 access may be restricted to the various datalogger configuration options, this includes the network as well as program configuration. It is designed so that an administrator can build a network and datalogger configuration and then restrict access to this configuration from unauthorized personnel. Configuration Mode is enabled by entering the password in the edit that displays when selecting the menu option **File | Configuration Mode** from the Network Configuration screen.



Note: When upgrading an existing copy of MultiLogger the password will be activated, when performing a new install the password will be de-activated!

To exit Configuration Mode simply re-select **File | Configuration Mode**, while in Configuration Mode you will see the option checked on the menu.

Contact your software vendor or Canary Systems if you do not know or have lost your password. **Note:** By default MultiLogger is installed with the password **default**, change this using the Change Password form. Also, the option **Enter Password at Startup** is also selected by default, this means that when MultiLogger is started Configuration Mode is automatically entered, you do not need to enter the password.



Use the menu item **File | Change Password** to modify the default password for MultiLogger.

Enter the current password in the **Old Password** edit. You should know what it is because you needed it to enter Configuration Mode!

Enter the new password in the **New Password** edit.

Confirm the new password in the **Retype Password** edit.

For security none of the edits will display the passwords that you enter. Passwords may be from 6 to 255 characters in length.

Check **Enter Password at Startup** to automatically enter Configuration Mode at the startup of MultiLogger. **Note: You must enter the Old Password for this setting to be saved!**

Press **Help** to display the on-line help topic.

Press **Accept** to accept the New Password/Enter Password settings.

Press **Cancel** to cancel the password entries.