

## How Do I Disable the Login Form on a Windows2003 Server? Frequently Asked Question #25

### Overview

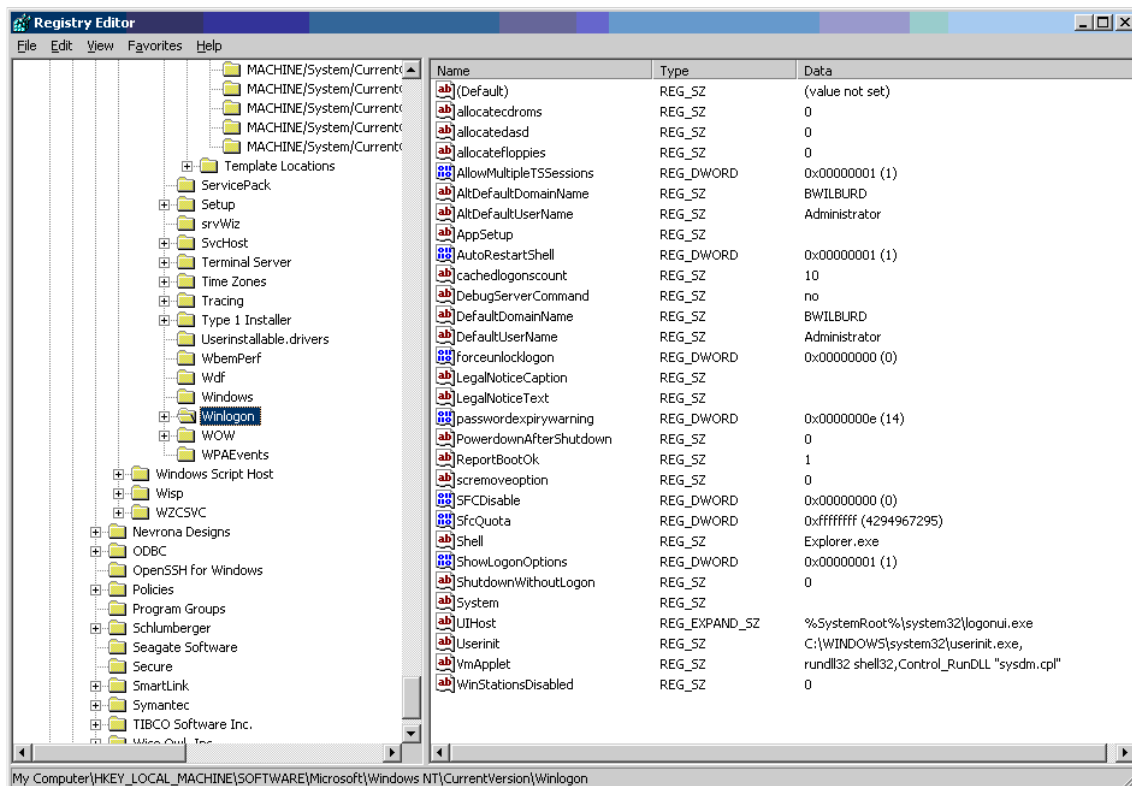
When MultiLoggerDB is running on a Windows2003 Server, usually as part of a MLWeb deployment, it is desirable to avoid having to login the machine upon restart. Without a mechanism to bypass the Windows login the machine will wait at the login form until the Administrator logs it in, this will interfere with the startup of MultiLogger and automation of the Agent function to automatically collect data. Restarts are a regular occurrence with all Windows OS products due to the application of updates. This FAQ will outline the steps to modify the Windows Registry to bypass the login form.

**Note: If you are not familiar with the Windows Registry or use of Regedit it is strongly advised that you avoid making these modifications. Incorrect Registry entries can damage or even completely disable the OS necessitating a complete rebuild of the machine.**

### Registry Modifications

All Windows OS's include a utility program called **Regedit** for modifying the system Registry. To run Regedit go to **Start | Run** and type **regedit <ENTER>**.

The Registry Editor should launch with the default view shown. This is usually the last section that was edited using the Registry Editor. Use the menu item **Edit | Find** to display the Find dialog. Alternately type **<CTRL> F** to display the Find dialog. Enter **winlogon** in the **Find what:** edit. Press **<ENTER>**. Press **<F3>** to repeat the find until the **HKEY\_LOCAL\_MACHINE\SOFTWARE\Microsoft\Windows NT\CurrentVersion\Winlogon** section is found. A sample view is below.



Note the **DefaultUserName** keyword. Double-click on it to display the keyword value editor and modify the value to match the login account that will be used for the automatic login. Usually the Administrator account is used.

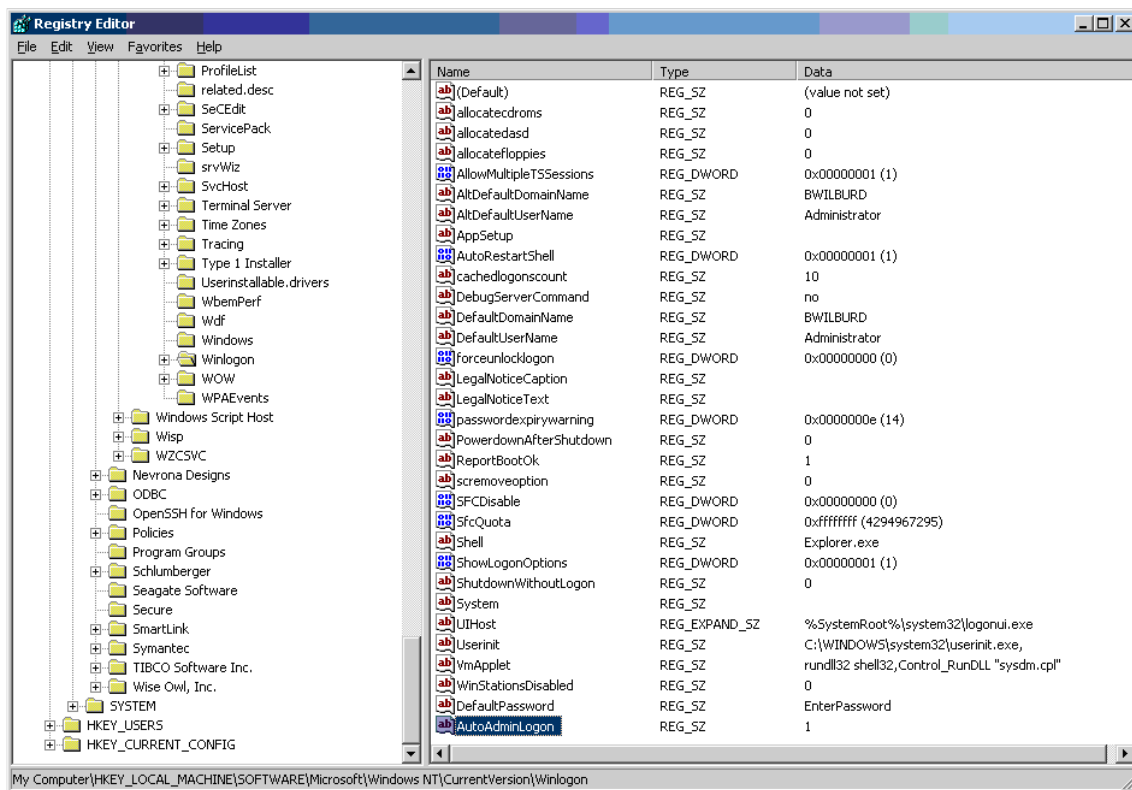
Note if a **DefaultPassword** keyword is available. It should display below **DefaultUserName**. Double-click on it to display the keyword value editor and enter the password associated with the default Username to be used for the automatic login.

If the **DefaultPassword** keyword does not exist then it will need to be created.

To create the **DefaultPassword** keyword, right-click on the **Winlogon** section name in the left panel. Select the item **New | String Value** from the menu that should display. The keyword name is **DefaultPassword**. Once created in the Winlogon section it will appear in the right panel at the bottom of the keyword list. Double-click on the keyword to display the value editor to enter the password.

Right-click on the **Winlogon** section name again and again select the item **New | String Value** from the menu that should display. Enter a new keyword named **AutoAdminLogon**. Once created in the Winlogon section it will appear in the right panel at the bottom of the list. Double-click on the keyword to display the value editor, enter **1** as the value.

A sample view of the modified **Winlogon** section is shown below. Note the new keywords at the bottom (they will be reshuffled to list alphabetically the next time you run **Regedit** and display the Winlogon section).



Close Regedit by clicking on the close button in the upper right corner. Changes are saved automatically.

Reboot the machine to test the auto logon.

**Note: If it is required to login a specific username then simply hold the <SHIFT> key down while booting the machine. This will force display of the login form.**