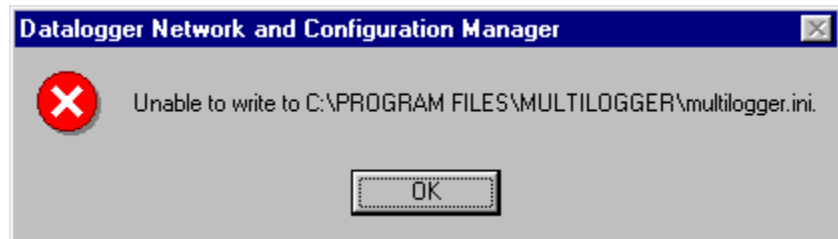


Why Does the Error “Unable to write to multilogger.ini” Occur?

Frequently Asked Question #19

Overview

When running MultiLogger on Windows 95/98/ME this error will sometimes occur, as shown at right. Usually MultiLogger will operate properly after installation, the error will occur once the Network Configuration has been defined or as nodes are added.



The problem is due to a limitation in Windows 95/98/ME of the size of the multilogger.ini file, this file is used to store various parameters related to the Network Configuration, such as the association between node names and configuration files. The error should not occur when running Windows NT/2000/XP.

Another symptom of this problem is that when performing updates to MultiLogger the MUpdate utility that launches as part of the update process will hang, the update cannot be completed. It is also possible that when using MLSetup to edit the multilogger.ini file that saving the file results in an Access Violation or a corrupted multilogger.ini file.

MultiLogger, and its related support programs including MUpdate and MLSetup, has been updated to correct this problem, beginning with version 2.1.8 It is recommended that you update your version of MultiLogger. Software updates are available without charge via web download to registered users of the software, contact your software vendor or Canary Systems to register your software and obtain access information.

NOTE: When performing MultiLogger upgrades the MUpdate utility which runs as part of the upgrade procedure could take some time to complete so do not terminate the software, even though it may be shown as “Not Responding” in the Task Manager of Windows. To expedite the upgrade process you may delete the existing multilogger.ini file located in your \Program Files\MultiLogger directory, you will lose the associations between the nodenames in your Network Configuration and configuration files, but these are easily re-assigned once MultiLogger is updated. Beginning with MultiLogger version 2.2.0 the associations between nodenames and configuration files are stored in the file multilog.ini so when using or upgrading to this version you can safely delete multilogger.ini without losing any settings.