

How Do I Start MultiLogger at System Startup and Start the Agent? Frequently Asked Question #17

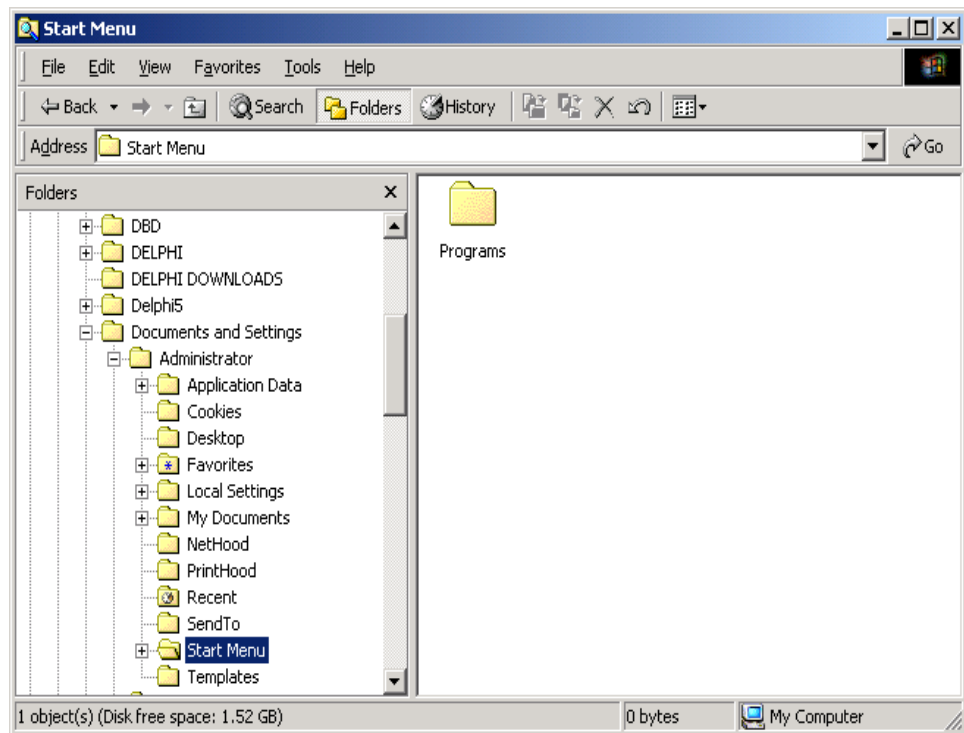
Overview

This FAQ will provide direction to configure your Windows® system so that MultiLogger will be loaded automatically at system startup and then start the Agent so that data collection can continue or proceed as it was configured. This will insure regular collection of data from systems configured in the Network Configuration should the collection computer loss power or be accidentally or intentionally rebooted.

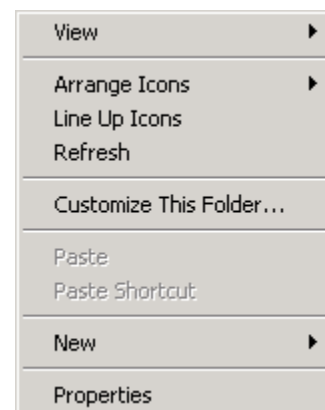
These instructions are specific to the Windows® 2000, however other versions of Windows® are very similarly configured.

Select **Start | Settings | Settings & Taskbar...**, then the **Advanced** tab. Click the **Advanced** button on the Advanced tab, this displays the Start Menu group for the current user, an example shown at right.

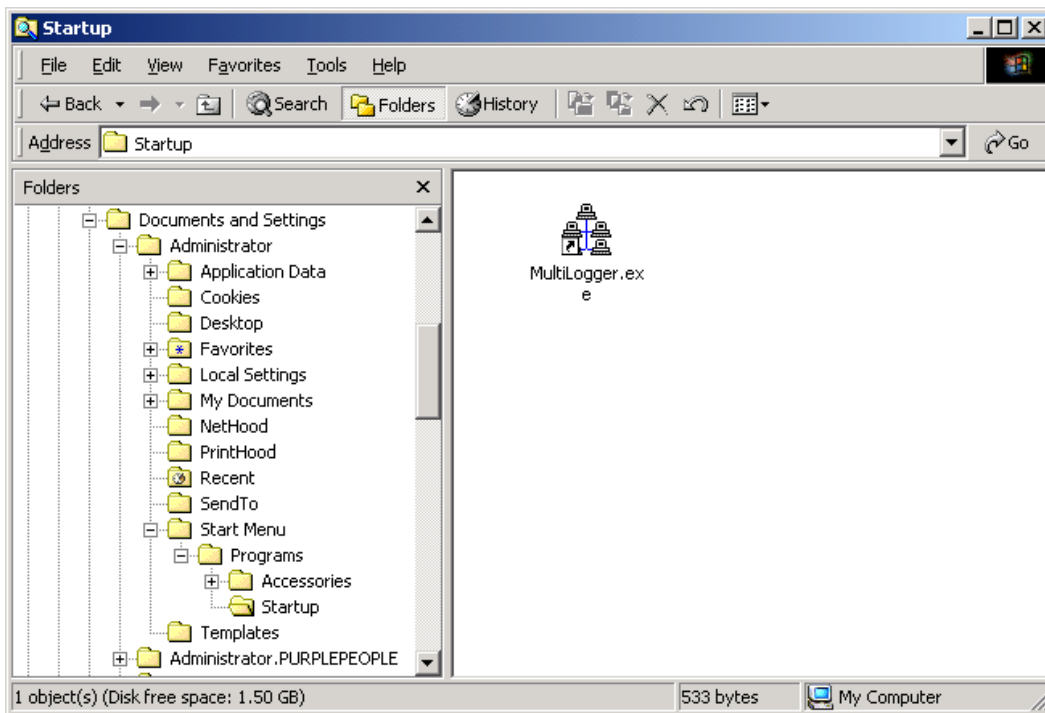
Note that the user group selected will default to the currently logged in user, changes to this user configuration will only apply to this user. To change the startup options for all users on this machine then locate the **All Users** group further down the tree.



Expand the **Start Menu** group to the Startup group, then with the Startup group selected right click in the window shown to the right of the tree. This will display the standard Explorer menu, as shown.



Select **New | Shortcut**, this will display the Create Shortcut wizard. Locate the MultiLogger.exe, usually installed in **\Program Files\MultiLogger** and press **OK**. At the completion of the wizard you should now have a MultiLogger.exe item in the Startup group, as shown below.

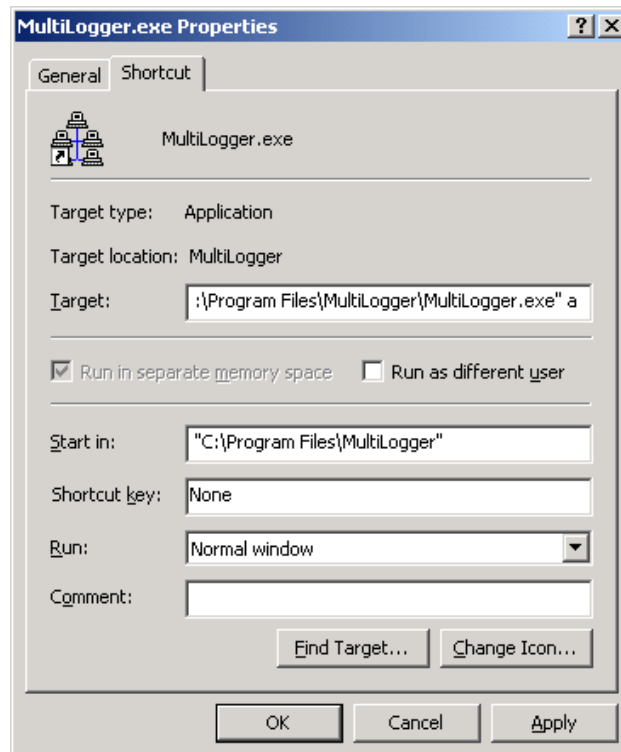


Select the MultiLogger icon and right click to display the Explorer menu, select the **Properties** option. Note the **Target** edit, add the letter **a**, or **A** at the end of the quoted program path and name, see the example at right. This will invoke MultiLogger with the A option, which starts the Agent at startup.

Click **OK** to complete the configuration.

Close the Startup group editor by clicking on the form close button in the upper right corner of the form.

When Windows is restarted MultiLogger will now start automatically and the Agent will start collecting data based on its settings.



of