

How Can I Change the Default Language Setting?

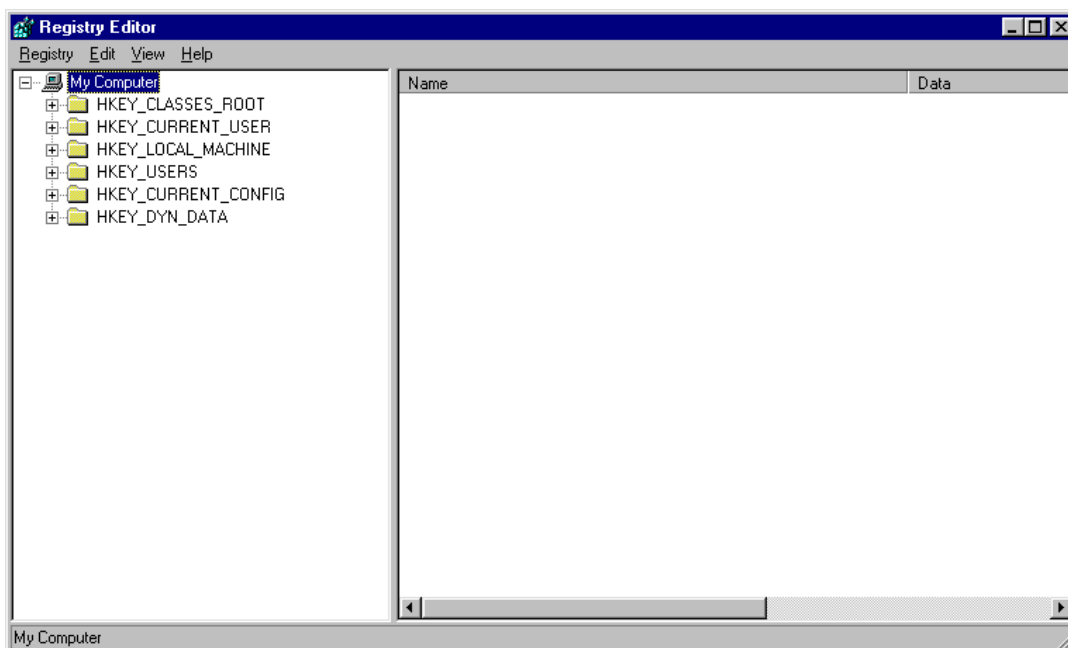
Frequently Asked Question #11

Multilogger, including Roobrik and Insite, include support for display of the form captions, hints and user messages in various languages, including Italian and German. Presently work is underway to support additional languages, further information may be obtained from Canary Systems.

The “resources” required to facilitate this functionality are stored in a resource file for each application and each language. For example, MultiLogger includes a file **multilogger.ita** which includes the resources to support the Italian language. At the startup of MultiLogger, Roobrik or Insite, a check is made of the language setting of your Windows OS, if there is a matching resource file for the language currently in use, this file will be used to provide the resources to run the program. However, there may be occasion where you need to specify the setting, bypassing the automatic operation. There are numerous reasons why this may be required, for example, there may be some problem with the non-English version you wish to avoid or confirm by running in the English mode. Also, many languages include “sub-languages”, for example Swiss Italian. MultiLogger currently provides support for “standard” languages, separate resource files for the sub-languages are not provided therefore you must bypass the automatic system (which will not find the required resource file and hence will display in the default mode, which is US English).

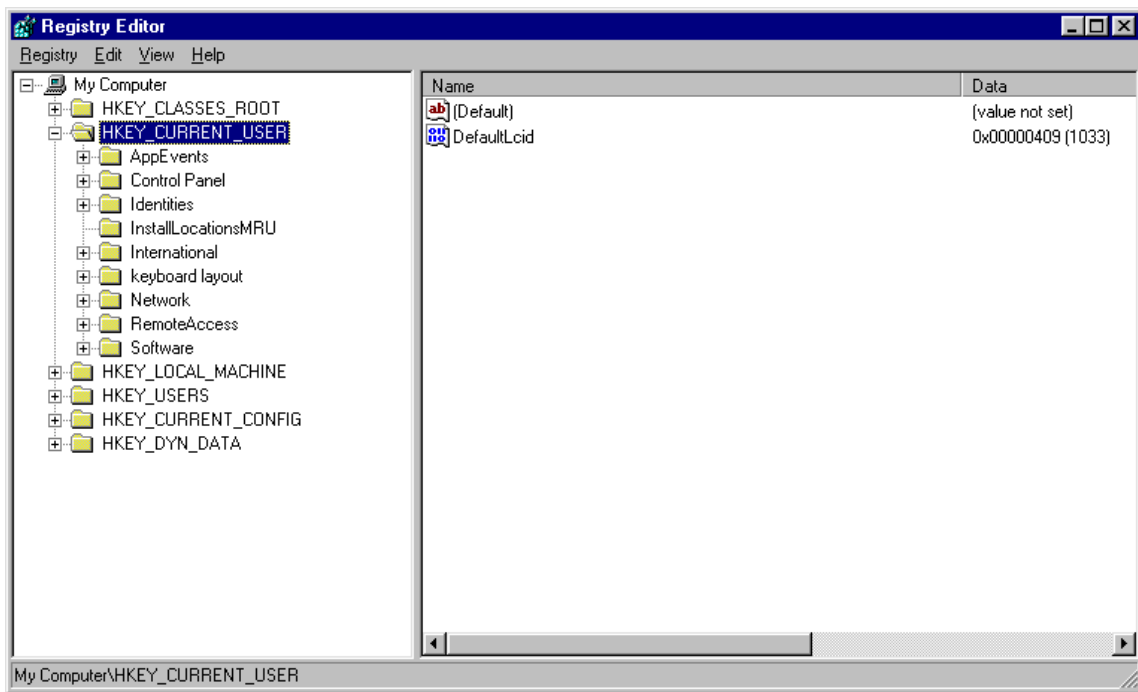
To specify a language setting the system registry must be modified. The system registry consists of a number of groups of “keys”, or hardware and software configuration options, with requisite data for each key, essentially a database of all the configuration options for your system (contained in the file reg.dat). The registry is organized in a tree fashion (although it is popularly likened to “a bowl of spaghetti”), keys being organized in various and sundry ways which we hardly have the time to fully understand or explain. All Windows versions include a registry editing program, called regedit, which is normally invoked by selecting the **Start | Run** option, typing in **regedit.exe** and pressing <ENTER>. **NOTE: Be careful when searching through the registry and adding/making changes, one wrong key/data entry and your system could become inoperable! (All of you who have seen the infamous “Corrupt Registry” error can attest to this!)**

At startup of regedit you should see a screen similar to that depicted below.

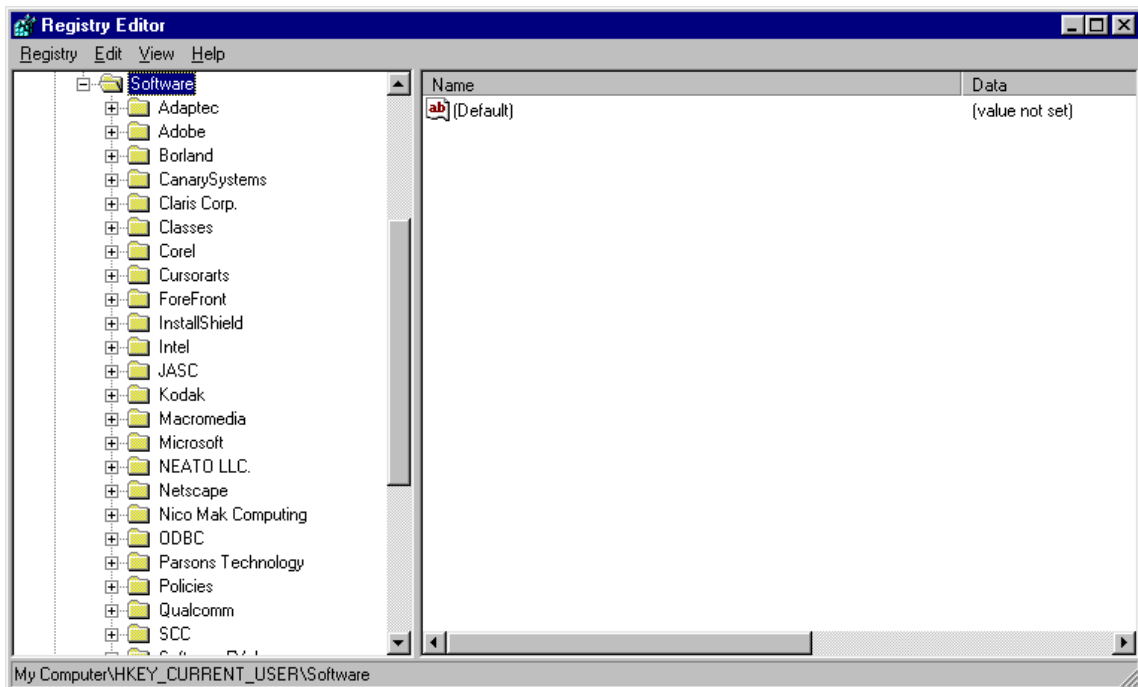


Note: The registry may be exported to a backup file prior to modification, if desired. See the menu option **Registry | Export Registry File**.

Expand the section **HKEY_CURRENT_USER** by clicking on the + located to the left. You should see the tree expand as shown below.



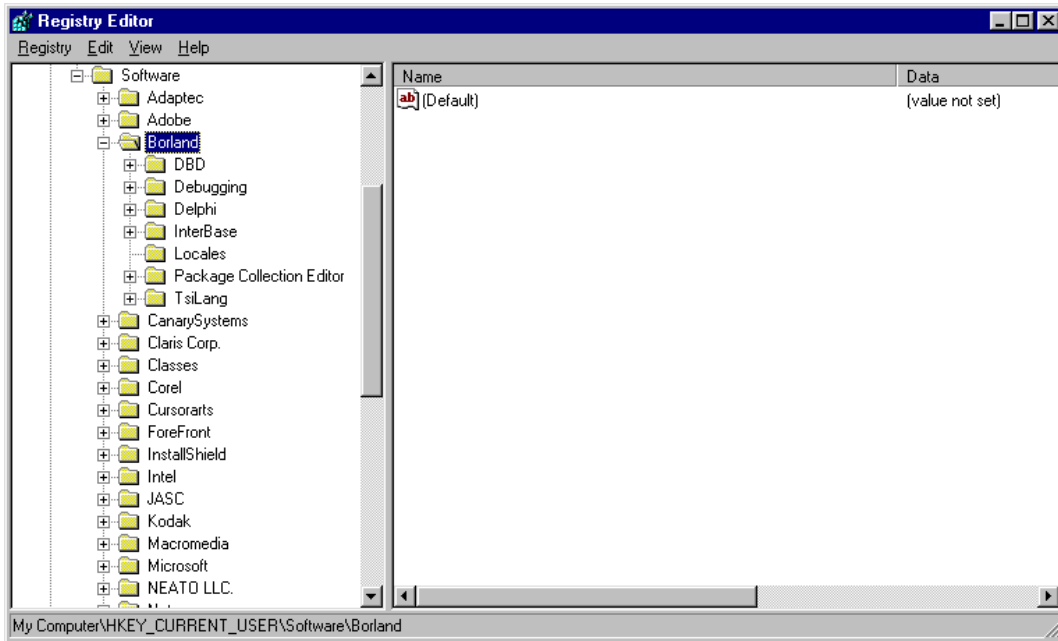
Note the **Software** key, expand this to reveal a listing of many of the applications installed on your machine, as shown below.



Note the presence of the **Borland** key. If this key is missing you will need to add it.

It is added by selecting **Software** (as shown in the screenshot) and selecting the menu item **Edit | New | Key** (or use a right mouse button click). After selecting this option the cursor will locate to the bottom of the Software key where you can type in **Borland** as the key name.

If the **Borland** key previously existed then click on the **+** to expand it, you will see a **Locales** key, as shown below. If you created the Borland key then you will need to select it and repeat the menu item **Edit | New | Key**, then enter **Locales** as the name of the key.



The last step is to add a string value to the Locales key for each application where you wish to configure the language setting. Select the **Locales** key, then **Edit | New | String Value**. You will be prompted for the name of the key, enter the application name, including the complete path. The Data or string value for each key specifies the language setting to use. For example, to specify US-English, enter a string value (by double-clicking on the key) of **EXE**. For Italian enter **ITA**, for German enter **DEU**. That's all there is to it! Click on the **x** in the upper right corner to close the registry editor.

