



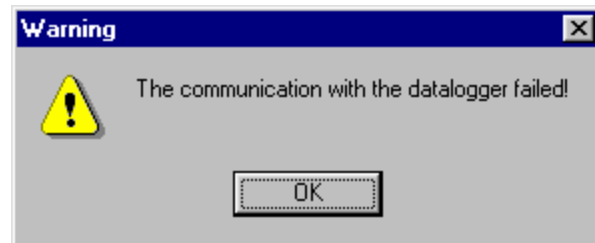
75 Newport Road, Suite 211  
New London, NH 03257  
Voice: (603) 526-9088  
Fax: (603) 526-9004  
[info@canarysystems.com](mailto:info@canarysystems.com)  
[www.canarysystems.com](http://www.canarysystems.com)

## I Am Using a Cell Phone Link But After Pressing Update I Can't Communicate?

Frequently Asked Question #10

Cell phones are a convenient way to communicate with remote data acquisition systems based on the Campbell hardware. The coverage is becoming ubiquitous (for better or worse!) making deployment more reliable. The systems are usually deployed to control power using the Control Ports of the Campbell Control Module as this greatly conserves the battery life of the system and makes it feasible to recharge using solar panels if desired.

However, this also means that after download and subsequent compile of a new datalogger program the ports are reset, this includes the port which is being used to control power for your connection! The **Zero, Update/Start, Stop, Clear** and **Test** functions of MultiLogger all involve generation and download of a new datalogger program, if these functions are executed the download will complete but the monitor mode will never start, the error shown at right will display after a required timeout.



The short answer to this question is, "Don't do that!", but alas reality beckons, it may be necessary to perform these functions remotely from time to time. If the system has been configured to activate the cell phone for a certain "window" every hour or every day then it is simply a matter of waiting until this time has approached, then communication may be established again with the system. Otherwise the cell phone system could be configured to remain ON at all times. Further information on the power control options when using cell phones may be found in Campbells' COM100 Operator's Manual or Canary Systems' MultiLogger Application Note #6.