



## Using IBOConsole to Execute MultiLoggerDB Scripts Database Application Note #6

### Overview

The Firebird database server utilized by MultiLoggerDB is a powerful ANSI-92 SQL database system. There are a number of stored procedures and triggers, essentially database programming, stored in the database which supports the various functionality provided by the MultiLoggerDB system. This database programming is routinely updated, revised and enhanced to support new functionality or to extend existing functionality.

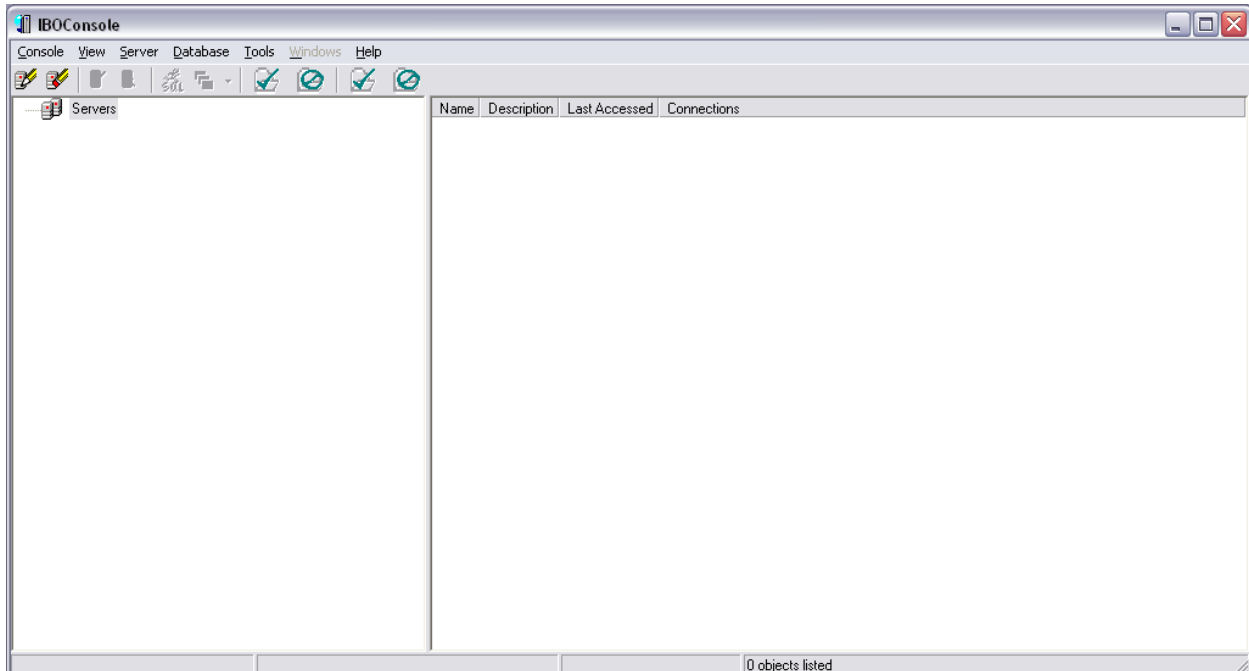
This Database Application Note will provide details regarding the configuration of IBOConsole, a utility program included with the MultiLoggerDB system, and its use to execute scripts provided by Canary Systems to update the database programming.

IBOConsole is installed using the IBOConsole install option on the MultiLoggerDB CD. Consult the MultiLoggerDB User's Guide for more details on the installation of IBOConsole.

### Configuration

The IBOConsole.exe shortcut will normally be found in the IBOConsole group in your Programs menu. Double-click to launch IBOConsole.

When IBOConsole is first started an empty configuration will show.



The first step is to configure the server connections, local or remote connections to the server are supported. Double-click on the **Servers** item in the tree shown on the left side of the form. This will display the **Register Server and Connect** form.

Select **Remote Server**, enter the **Server Name** in DNS or IP format and select the **Network Protocol** (usually TCP/IP). If Firebird Server is running on the same machine, use **localhost** as **Server Name**.

Enter the **User Name** (default administrator User Name is shown, SYSDBA) and password. Press **OK** to connect to the server using the configuration options shown.



The dialog box titled "Register Server and Connect" has two main sections: "Server Information" and "Login Information".

**Server Information:**

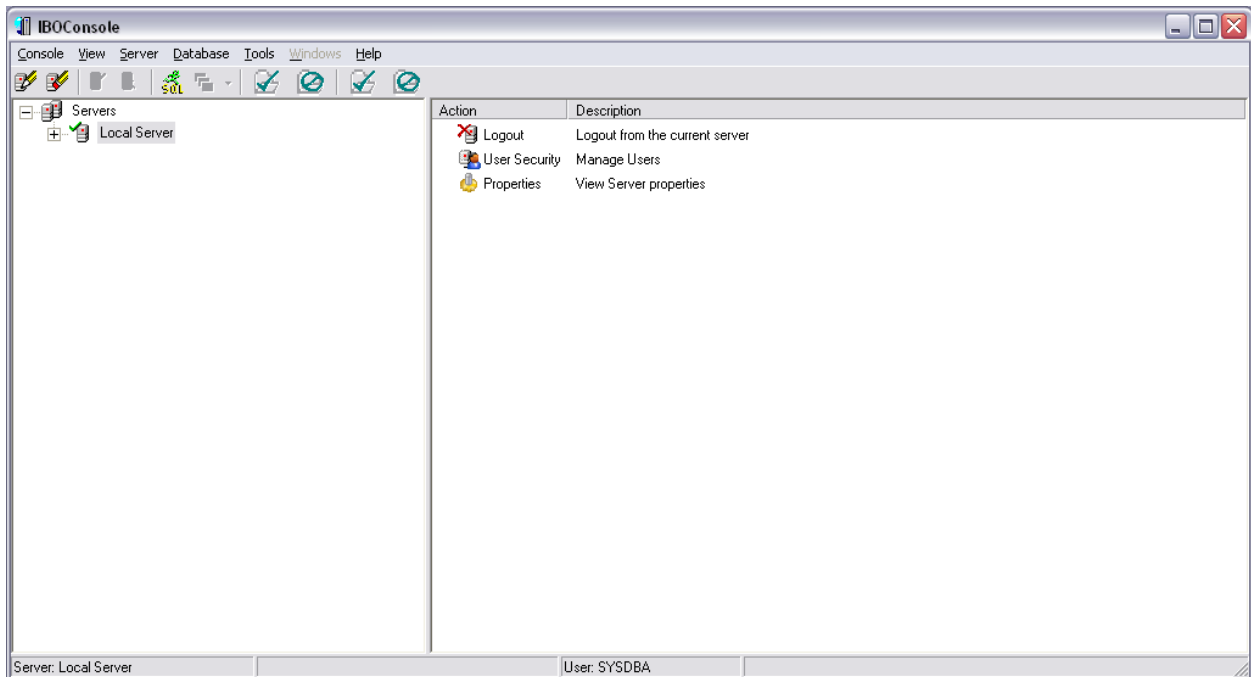
- Radio buttons for "Local Server" and "Remote Server". "Remote Server" is selected.
- Text field for "Server Name" containing "localhost".
- Dropdown menu for "Network Protocol" set to "TCP/IP".
- Text field for "Alias Name" containing "Local Server".
- Text field for "Description" (empty).
- Checked checkbox for "Save Alias Information".

**Login Information:**

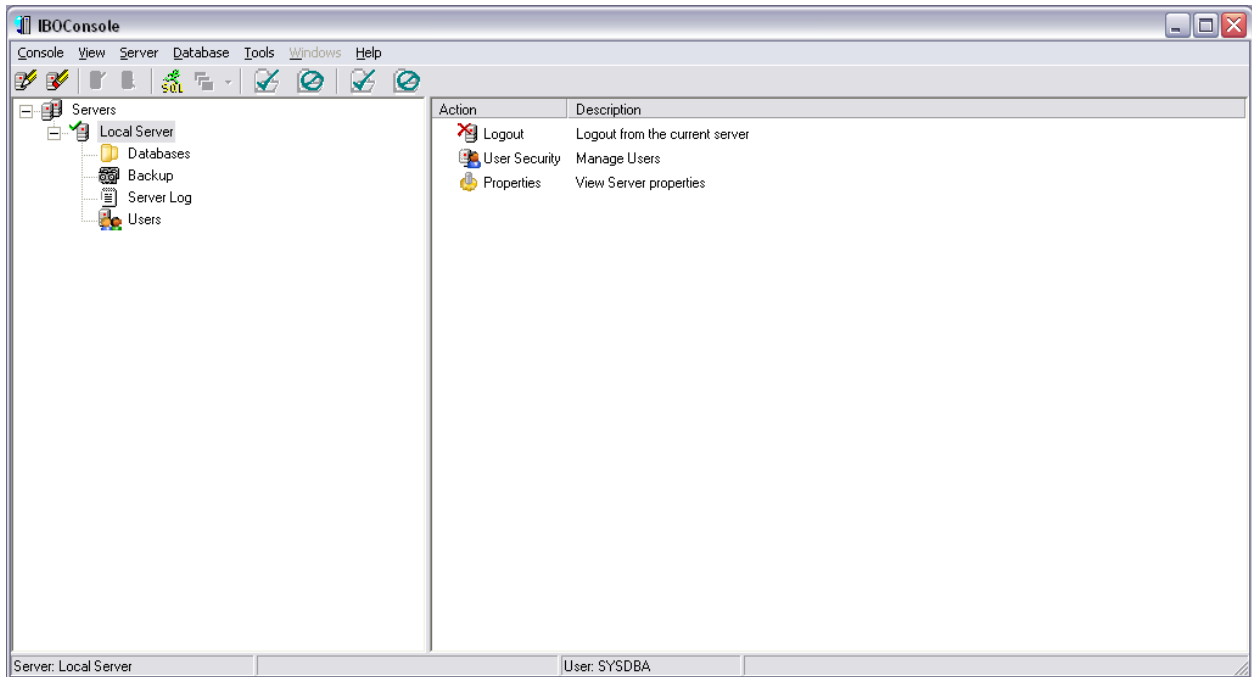
- Text field for "User Name" containing "SYSDBA".
- Text field for "Password" containing "XXXXXXXXXX".

Buttons for "OK" and "Cancel" are at the bottom right.

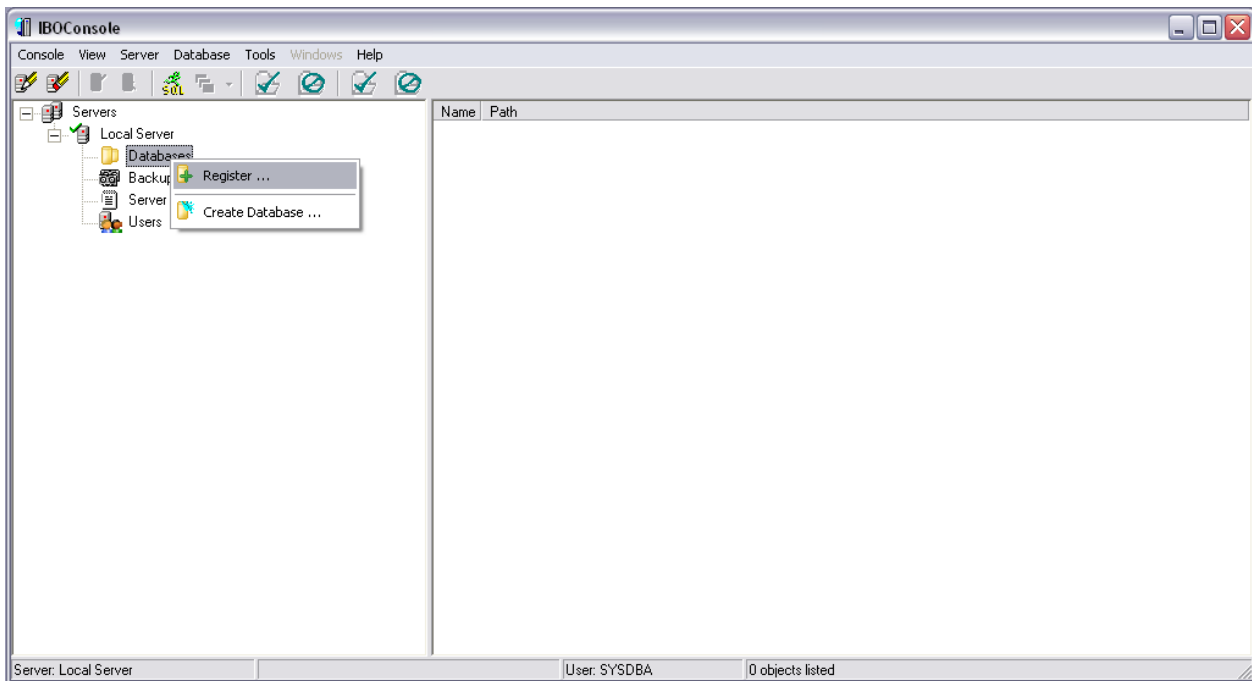
If the connection was successful the configuration in IBOConsole will update.



Double-click on **Local Server** to expand the connection options, shown below.



Right-click on **Databases** to display the database registration menu.



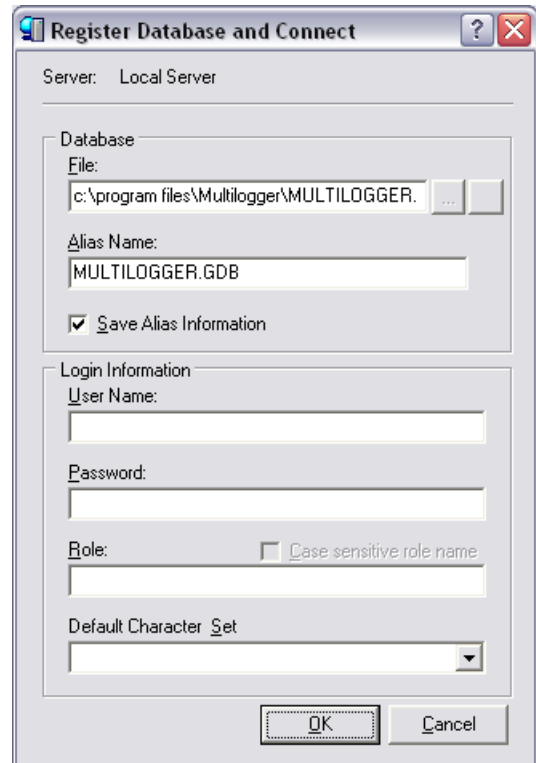
Select **Register** to display the **Register Database and Connect** form.

The actual database file must be specified using this form. Type in the path and name of the GDB file. When MultiLoggerDB is installed an empty GDB file named MULTILOGGER.GDB is copied to your **\Program Files\MultiLogger** directory, normally this file is copied or renamed to match your project, it is NOT recommended to use the MULTILOGGER.GDB as is.

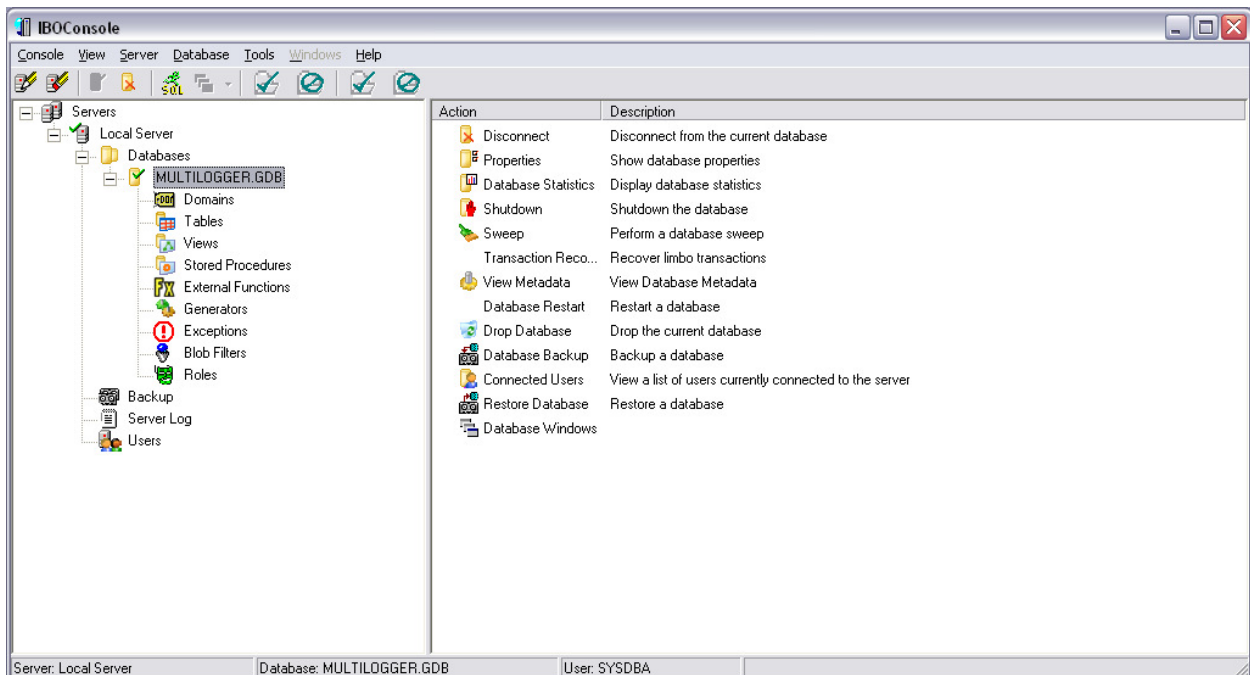
Make sure **Save Alias Information** is checked.

Other options can be left at their defaults.

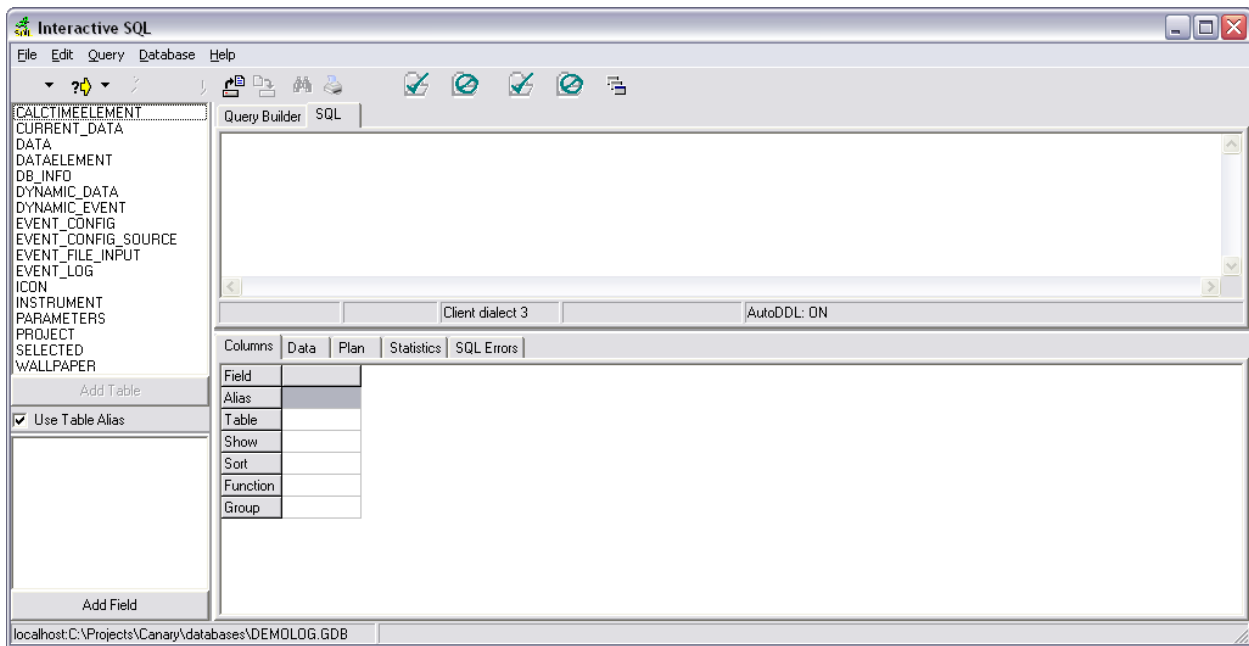
Click OK to connect to the specified database.



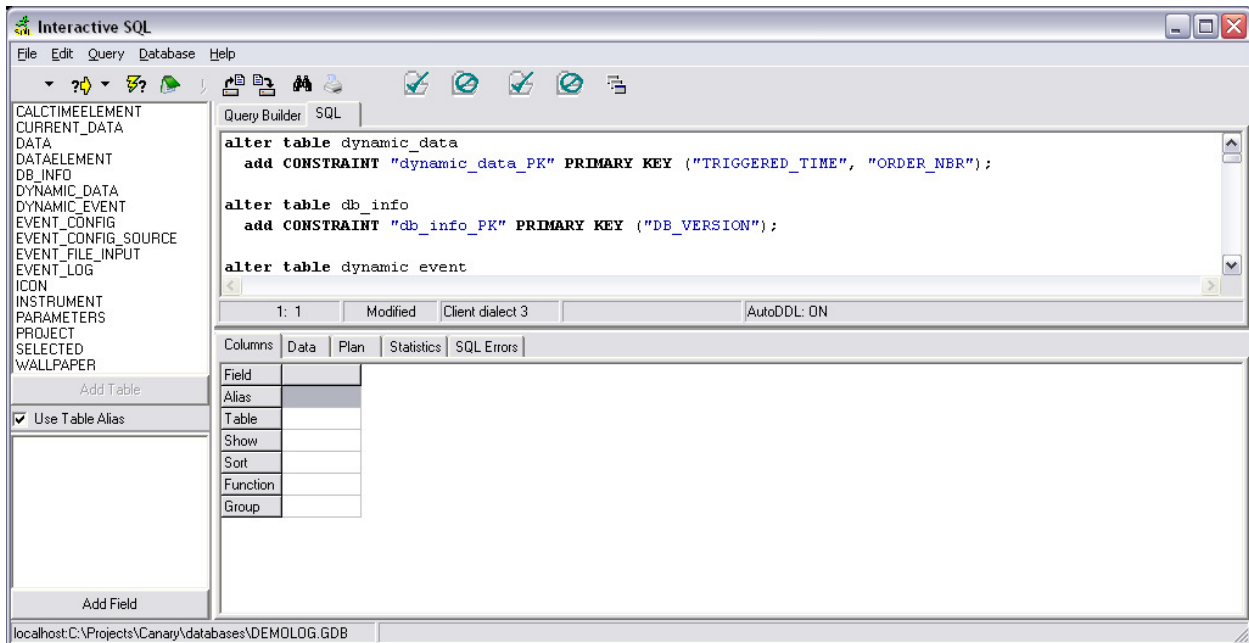
If the connection was successful then the configuration in IBOConsole will update.



Click the SQL button on the toolbar or select the menu item **Tools | Interactive SQL** to display the Interactive SQL window, shown below. The top portion is the SQL statement window, SQL programming can be directly entered in this window.



Select the menu item **Query | Load Script** to display a file dialog to browse and select the script. The script will then load in the upper window.

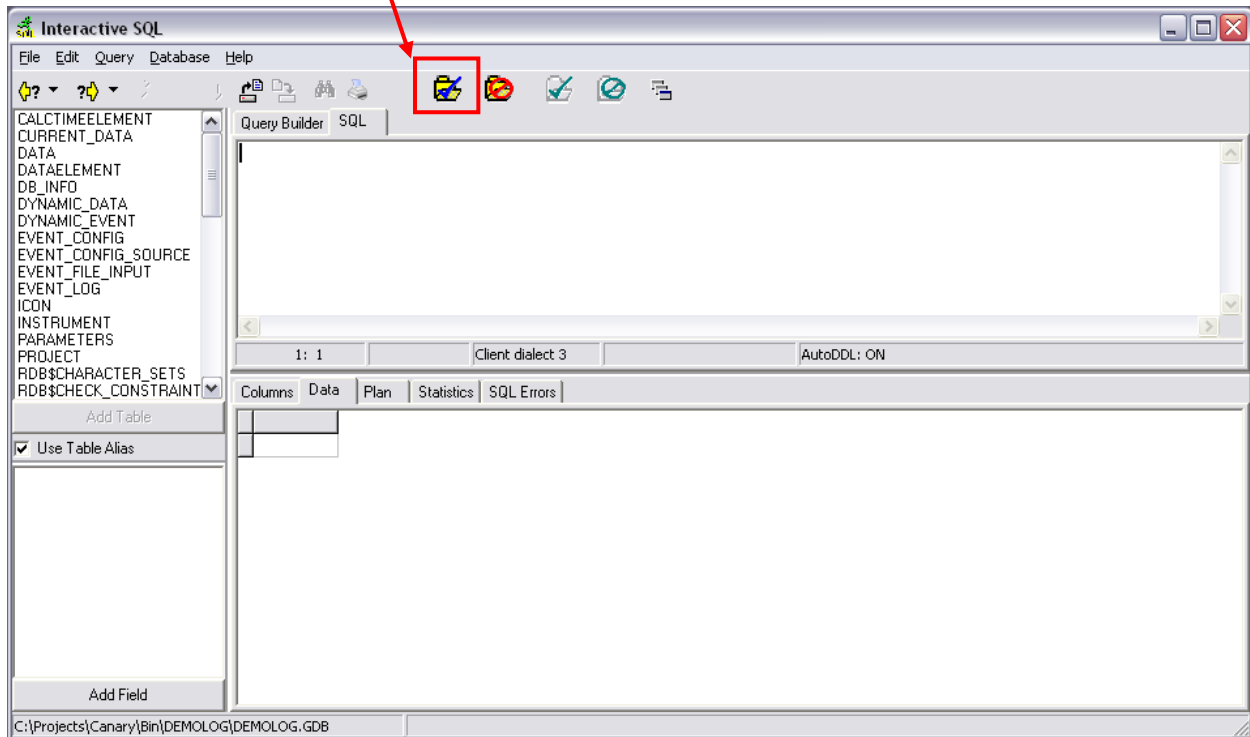


Click on the **Execute Query** button or select the menu item **Query | Execute** to execute the SQL programming. **Note: If the script executes correctly it will be erased from the window.**

Any errors will cause the script to halt. **Note any errors shown after executing the script.**

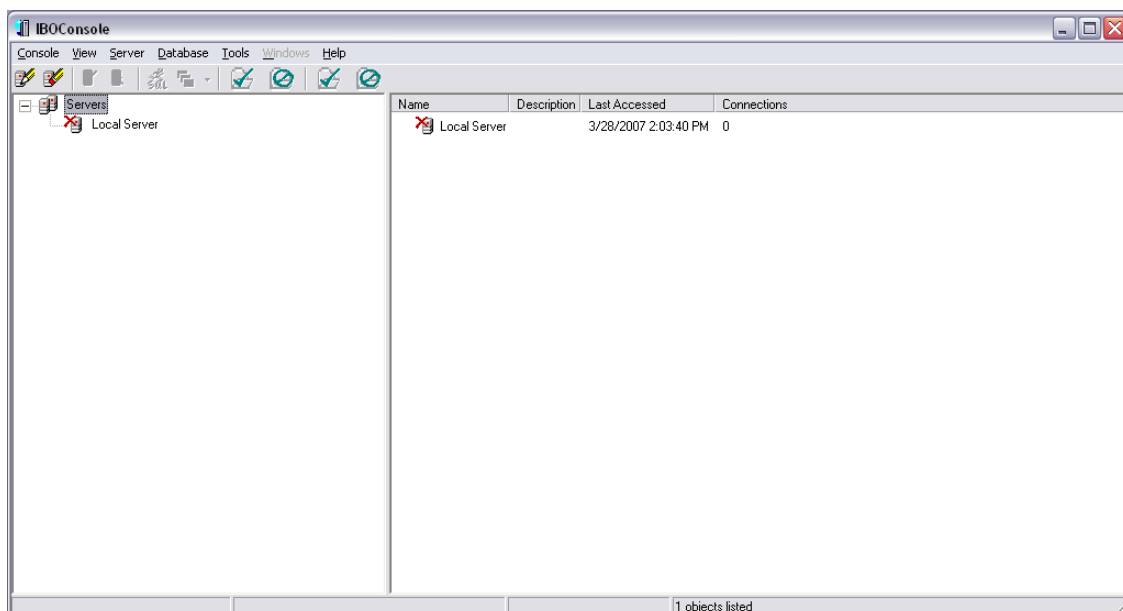
**Note: If after script execution button with blue check mark is enabled, click on that button.**

Click Here!



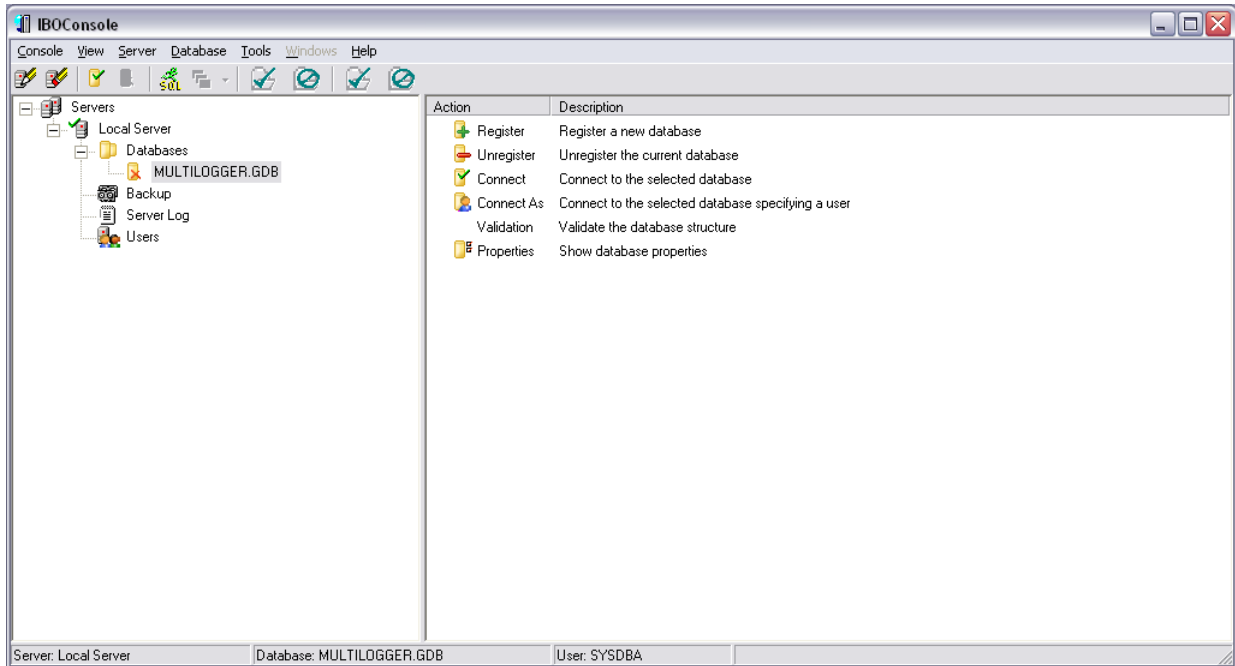
Close the Interactive SQL window by clicking on the upper right corner or selecting the menu item **File | Close**, you will return to the IBOConsole configuration. Script execution is complete!

To exit IBOConsole simply click on the upper right corner of the form or select the menu item **Console | Exit**. Note: At the next startup of IBOConsole you will be logged out of the server and disconnected from the database, as shown below.



To login to the server simply double-click **Local Server** (or the Alias for Remote Servers), a password prompt will display. Enter your password to log in to the server.

Double-click the database you wish to connect to.



The configuration will update with the database options.

