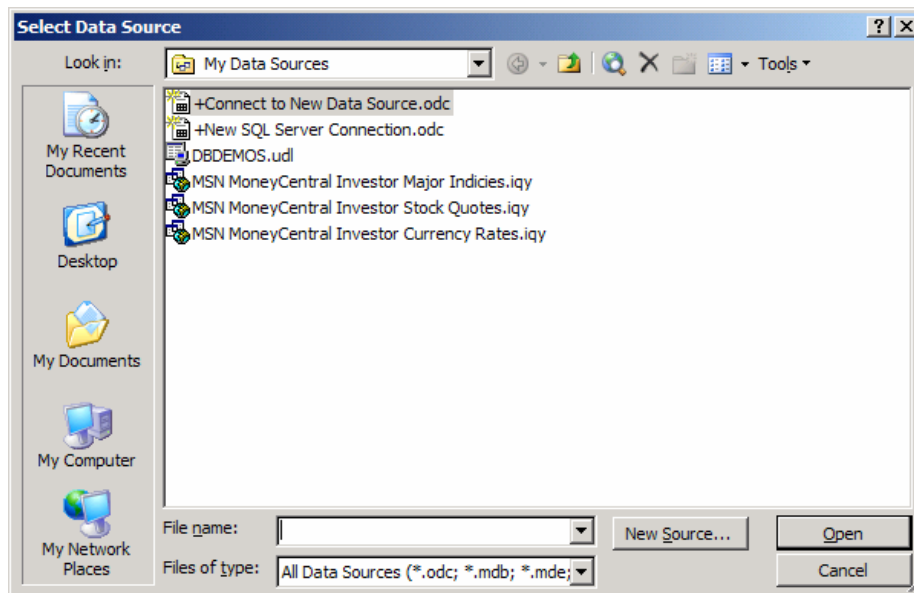


Importing MultiLoggerDB Data into Microsoft Excel Database Application Note #4

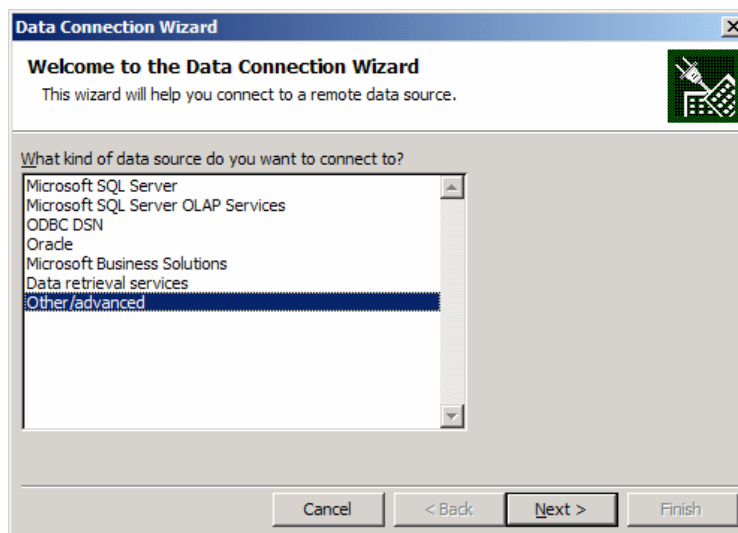
Note: You need to install the INTERSOLV Interbase ODBC Client before attempting the following. The ODBC driver is installed by running the IBWin32 installer in the \Interbase folder on the MultiLoggerDB software CD. Follow the on-screen instructions for the installer, select the INTERSOLV ODBC Driver when configuring which components to install.

The first step is configuring the DSN or **Data Source Name**.

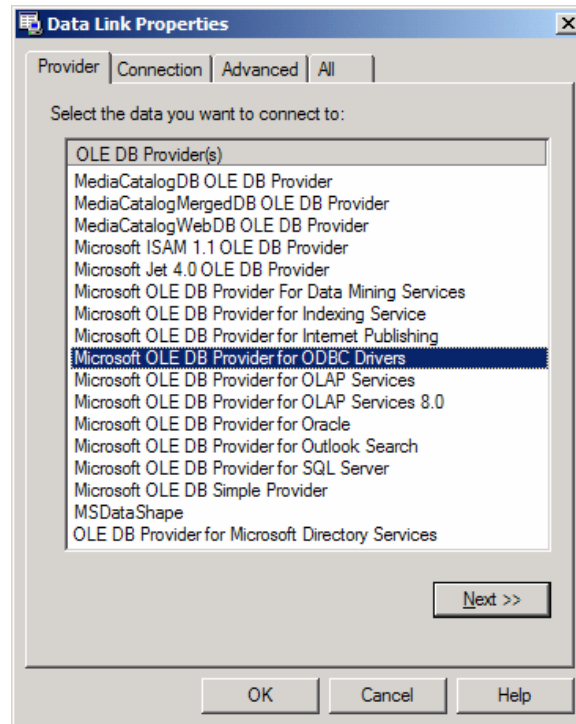
1. Select **Data | Import External Data | Import Data**, the following screen will display. Click **New Source...**



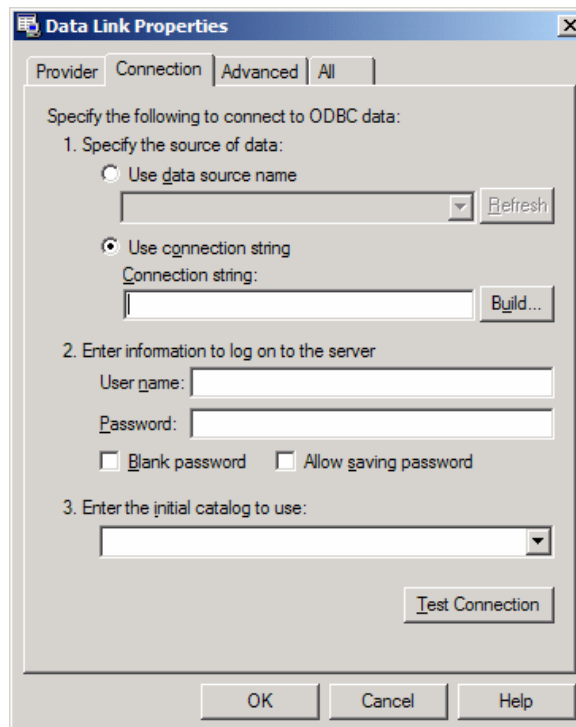
2. Select **Other/advanced** and click **Next**



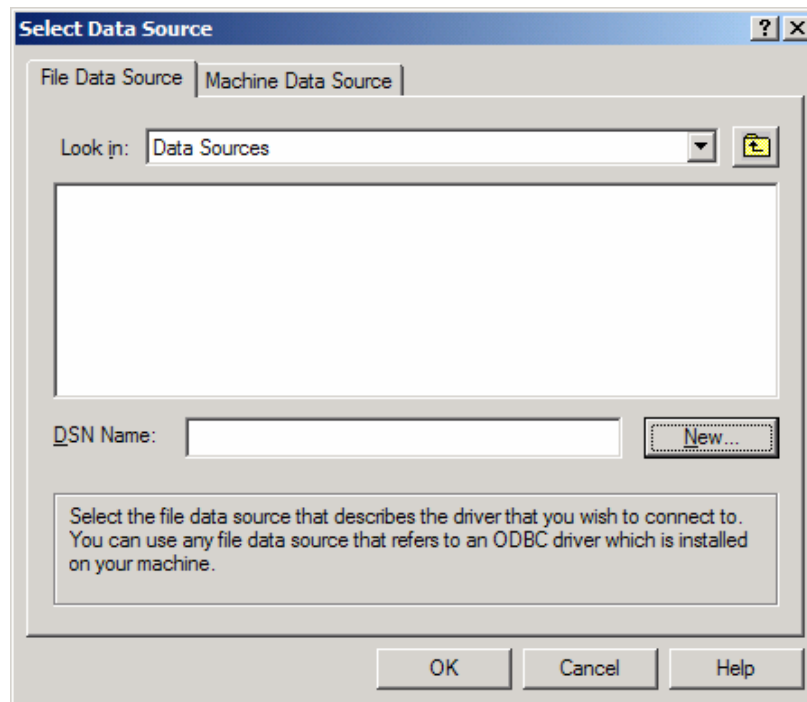
3. Select **Microsoft OLE DB provider for ODBC Drivers**, click **Next >>**



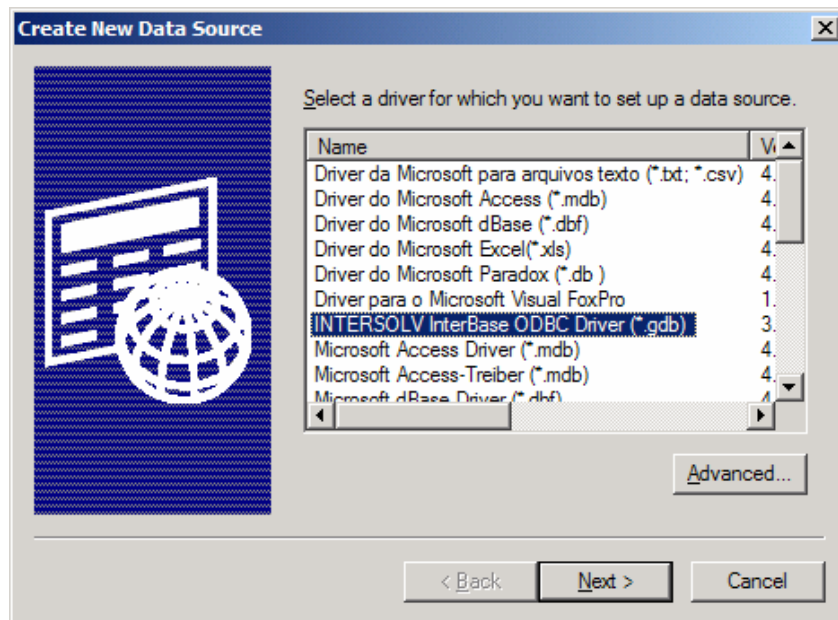
4. Select **Use connection string**, then click **Build...**



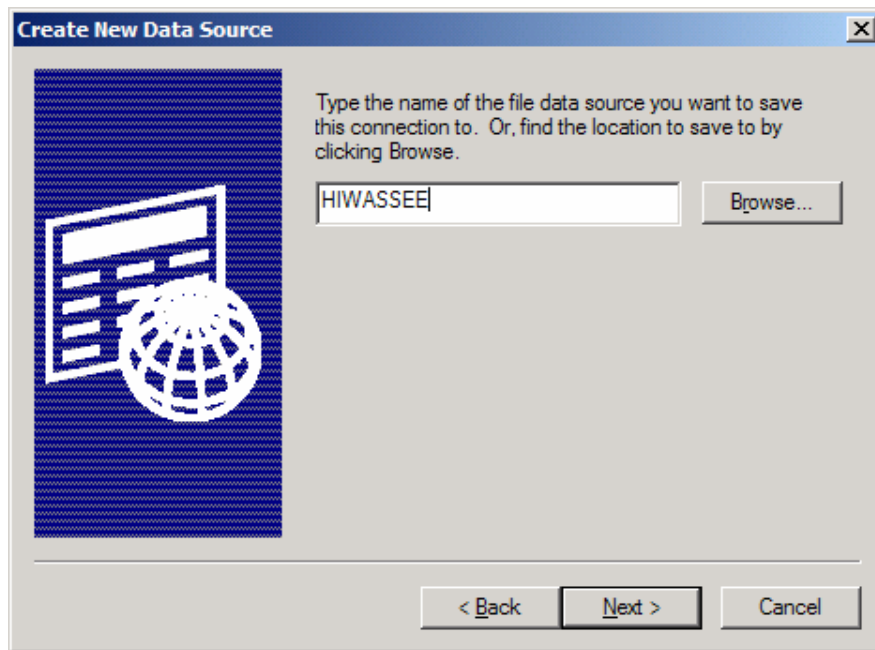
5. Click **New...**



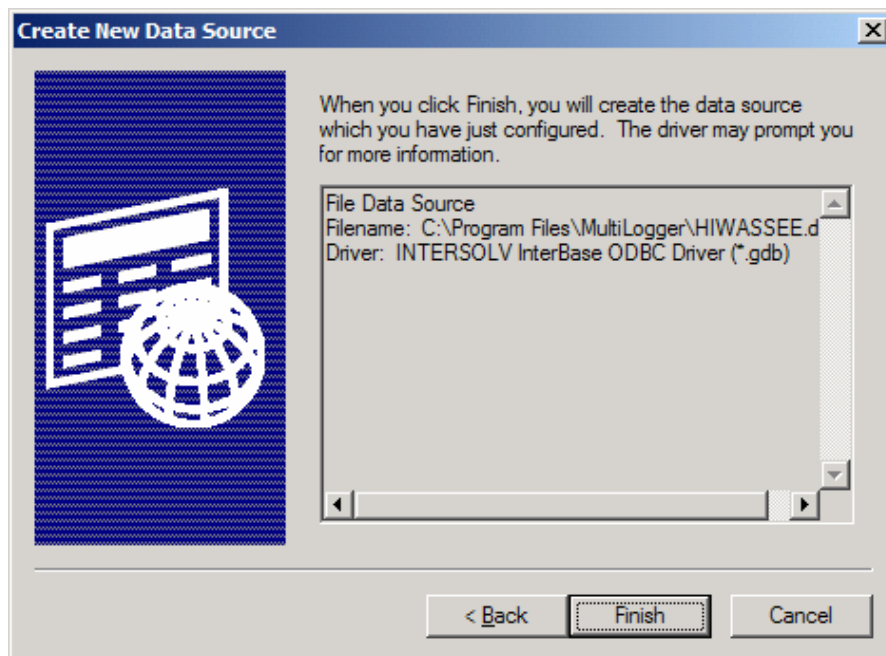
6. Select **INTERSOLV Interbase ODBC Driver (*.gdb)**, click **Next >**



7. Enter the **Data Source Name**, usually this matches the database name, click **Next >**

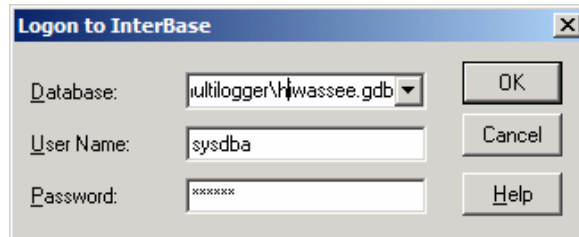


8. Click **Finish**

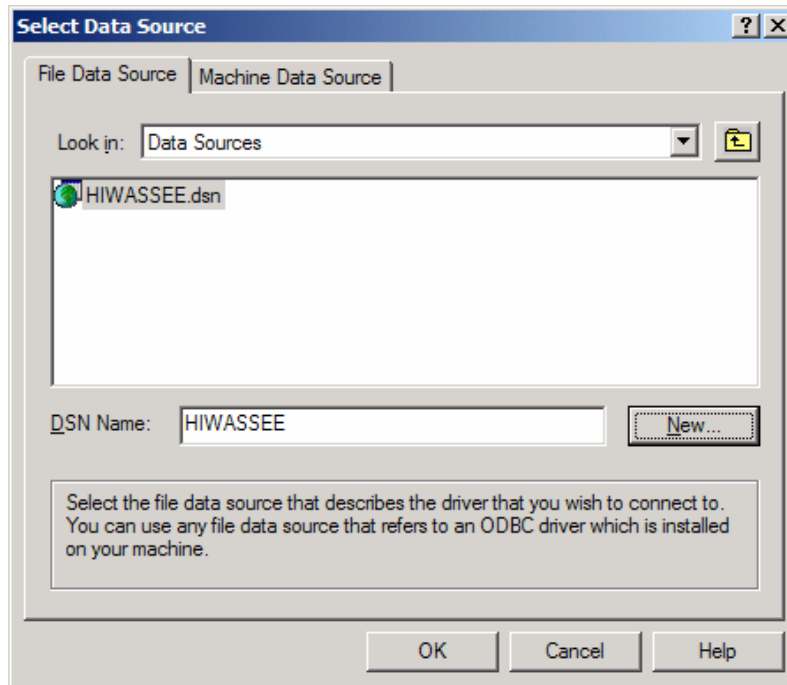


9. Type in the path to the Database, including the database file name in the **Database** edit. Enter the User Name and Password to connect to the server. Click **OK**.

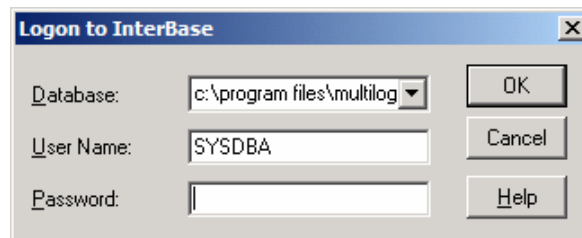
Note: It appears the Intersolv ODBC driver is limited to passwords of 8 characters or less. If the default password of masterkey is still in use it will need to be changed. Use IBConsole to change the Interbase account passwords.



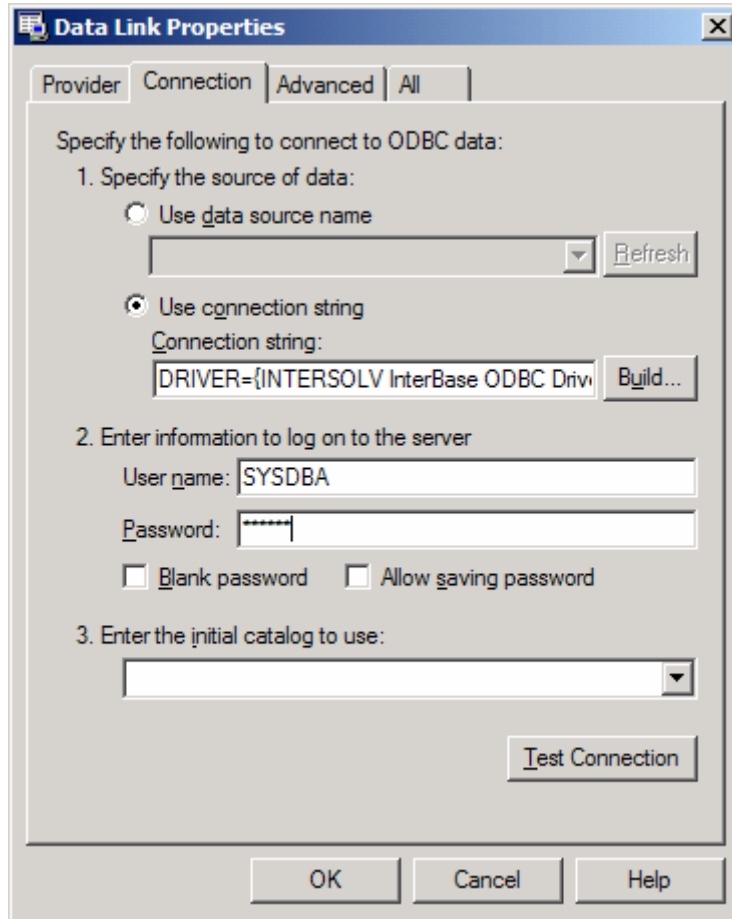
10. The .DSN should now appear in the list of available Data Sources, select the .DSN and click **OK**.



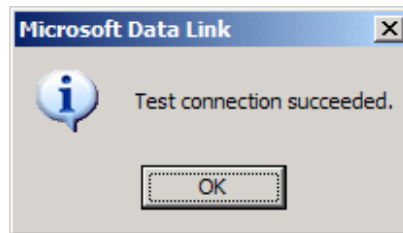
11. You will need to login again. Click **OK**.



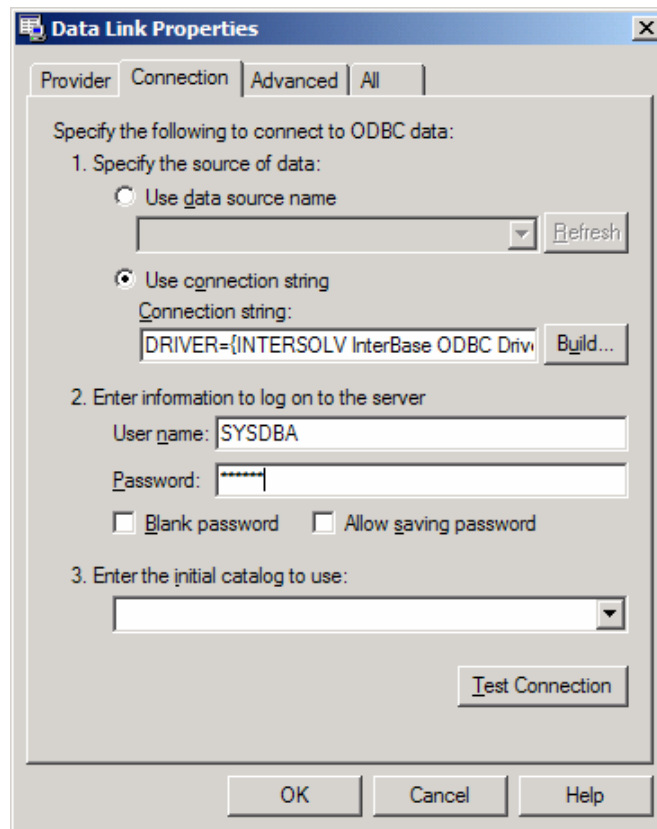
12. Note the Driver string in the Use connection string edit. Enter **User name** and **Password** for the Interbase server. Click **Test Connection** to check connection to the database.



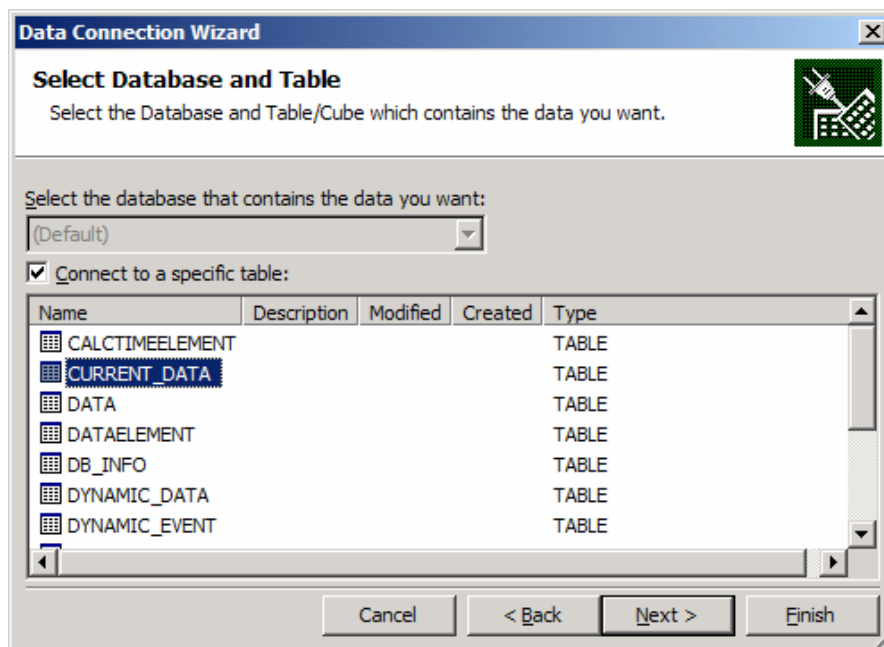
13. Text connection should succeed. If it fails verify availability of Interbase server from machine, this is usually done by running IBConsole or MLDBConsole. Click **OK** to return to the Data Link Properties form.



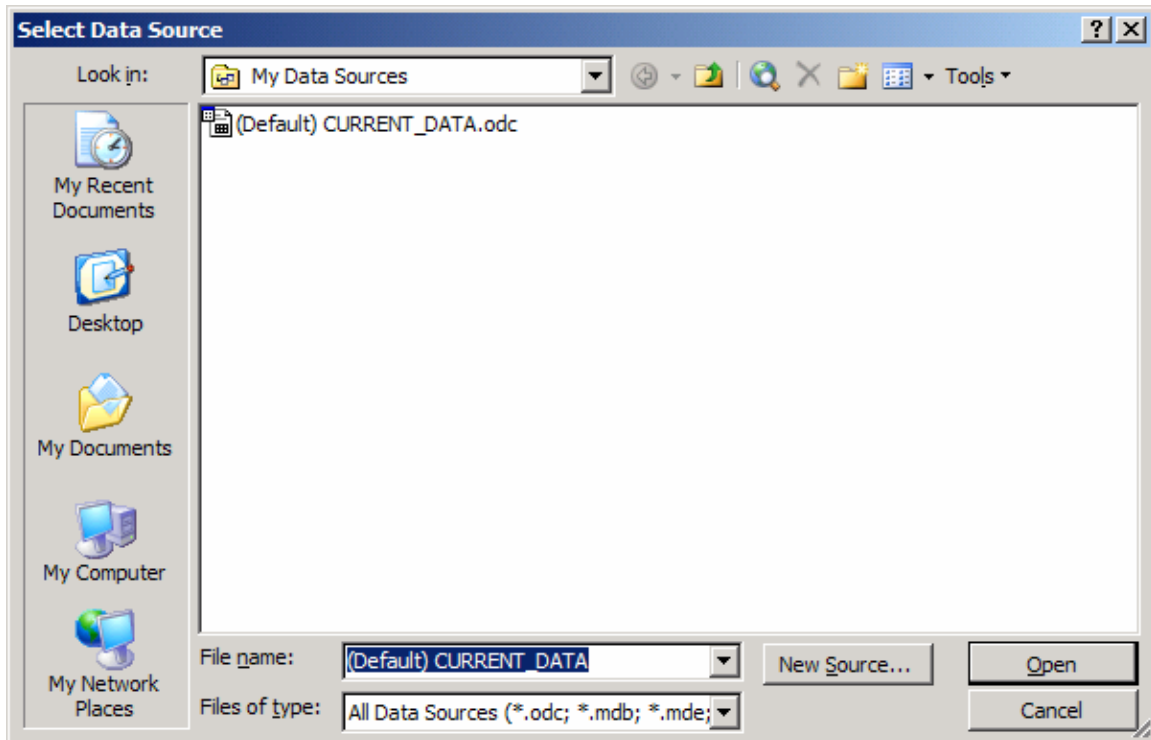
14. Click **OK**. It may take a few minutes to connect to the database and populate the list of tables and data.



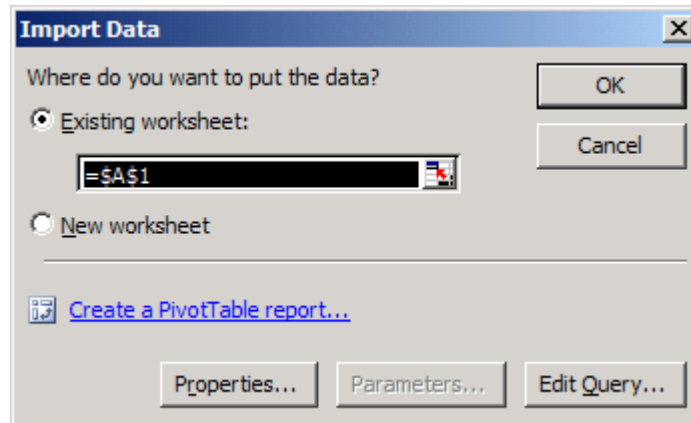
15. The MultiLoggerDB Tables should now display for selection. Select the desired table, click **Finish**. (Clicking **Next >** gives you an opportunity to provide a unique name for the Data Source, a default name will be used if Finish is selected at this juncture.)



16. The new Data Source will appear in the list and be selected, click **Open** to select.



17. Select the range to import the data. Click **OK**.

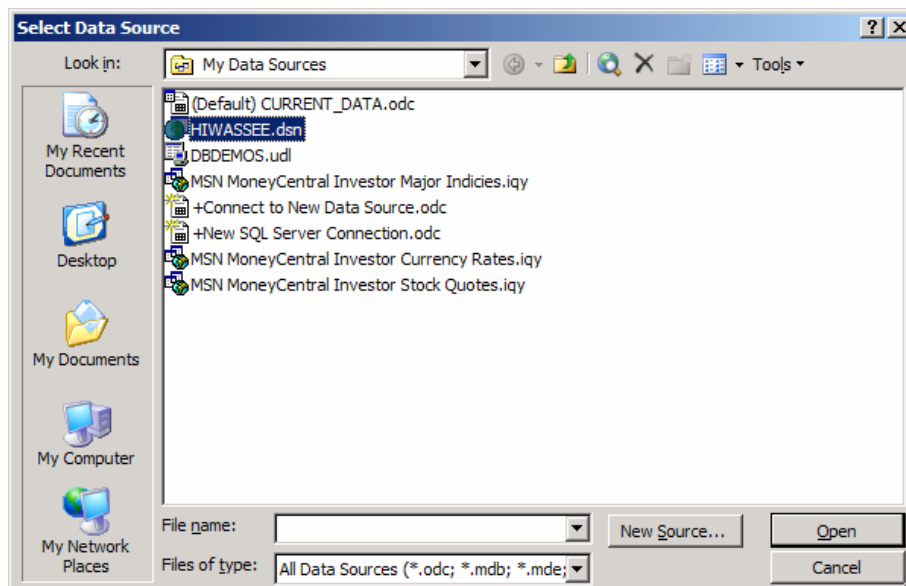


18. The worksheet should update with the data from the selected table. Import complete.

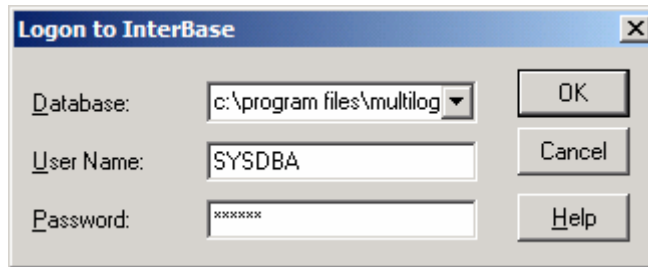
	A	B	C	D	E	F	G	H	I
1	DATA_ELEMENT	RECORDED	DATA	VALID	OFFSET				
2	619	3/12/2003 0:00	-99999	Y					
3	620	3/12/2003 0:00	-55.5	Y					
4	621	3/12/2003 0:00	4240	Y					
5	622	3/12/2003 0:00	46.94	Y					
6	1097	10/24/2002 0:00	0	Y					
7	1098	10/24/2002 0:00	0.125	Y					
8	1099	10/24/2002 0:00	0	Y					
9	1100	10/24/2002 0:00	0	Y					
10	1101	10/24/2002 0:00	0	Y					
11	1102	10/24/2002 0:00	0	Y					
12	1103	10/24/2002 0:00	0	Y					
13	1104	10/24/2002 0:00	-0.125	Y					
14	1105	10/24/2002 0:00	-0.125	Y					
15	1106	10/24/2002 0:00	-0.125	Y					
16	1107	10/24/2002 0:00	-0.125	Y					
17	1108	10/24/2002 0:00	-0.125	Y					
18	1109	10/24/2002 0:00	-0.25	Y					
19	1110	10/24/2002 0:00	-0.125	Y					
20	1111	10/24/2002 0:00	-0.125	Y					
21	1112	10/24/2002 0:00	-0.125	Y					
22	1113	10/24/2002 0:00	-0.125	Y					
23	1114	10/24/2002 0:00	0	Y					
24	1115	10/24/2002 0:00	0	Y					
25	1116	10/24/2002 0:00	0	Y					
26	1117	10/24/2002 0:00	-0.125	Y					
27	1118	10/24/2002 0:00	0	Y					

With the DSN configured it is easier to import data from other tables.

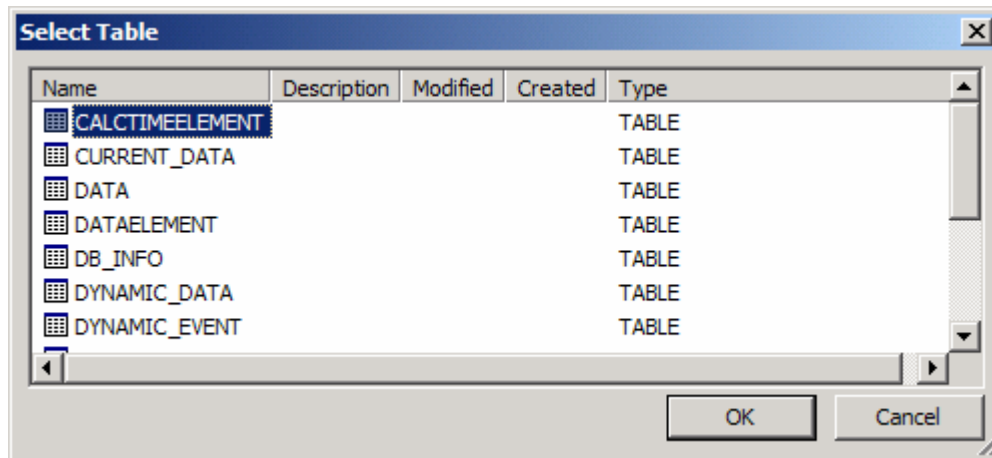
Select **Data | Import External Data | Import Data**, the following screen will display. Note the new DSN in the list of available Data Sources. Select the DSN and click **Open**.



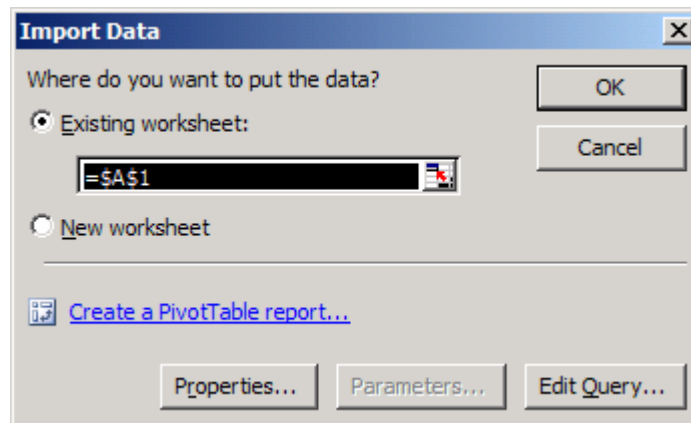
Enter Password and click **OK**.



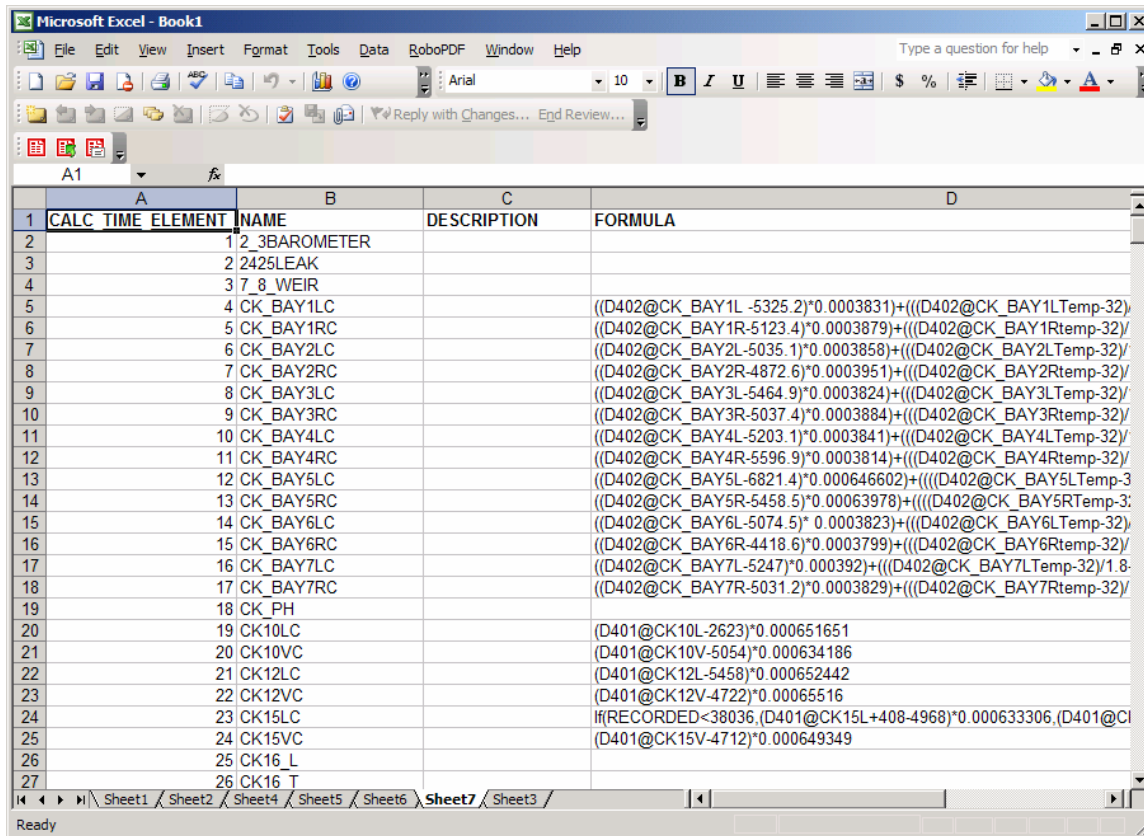
The list of available tables will display. Select the desired table and click OK.



Select where the data will be inserted. Click OK.



The worksheet will populate with the data.



Note: Use **Data | Import External Data | Edit Query** to modify the actual query. You will need Microsoft Query installed to use this feature.

MultiLoggerDB Tables

Table Name	Description
CALCTIMEELEMENT	Holds all calculated elements.
CURRENT_DATA	Holds last data values from all elements.
DATA	Holds all Data records.
DATAELEMENT	Holds Data Element records.
DB_INFO	Database information record.
DYNAMICDATA	Dynamic data records.
DYNAMICEVENT	Dynamic data event records.
ICON	Configured Icons.
INSTRUMENT	Configured Instruments.
PARAMETERS	Holds Output Parameter definitions.
PROJECT	Holds Project records.
SELECTED	Holds icon associations.
WALLPAPER	Holds image window graphics.

Note: Some tables may be missing depending on the revision level of your MultiLoggerDB database.