

CR2XX OS Download Instructions Using PakCom

Campbell Scientific, Inc
15 Jan., 2004

Note: This assumes that PakCom is installed on the computer.

1. Connect datalogger to computer using an RS-232 cable.
2. Launch PakCom, typically from Start, Programs, CR200 folder, PakCom. See Figure 1.

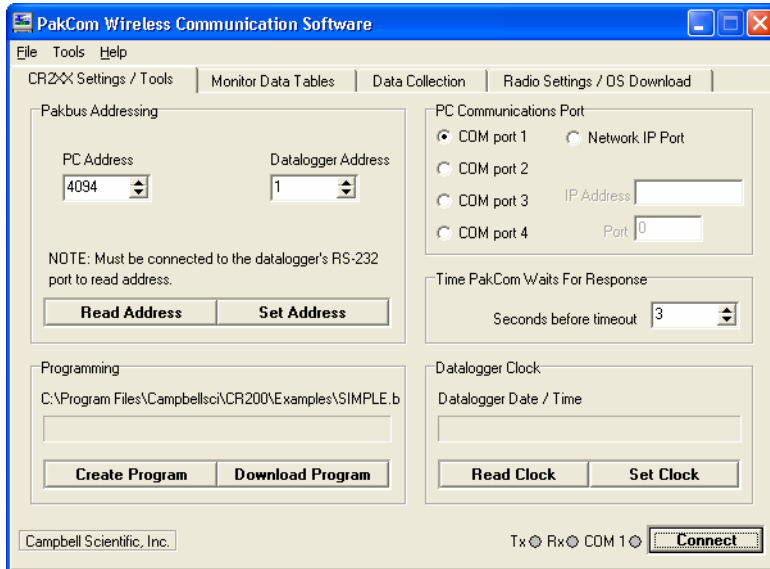


Figure 1 PakCom CR2XX Settings / Tools

3. Select appropriate COM port and select “Connect”. This opens the COM port and a green light will appear.
4. Select “Read Address”, This connects the software to the PC.
5. Select “Radio Settings / OS Download tab”, see Figure 2.
6. Select “Settings / OS”. This launches a program called PakOS, see Figure 3.

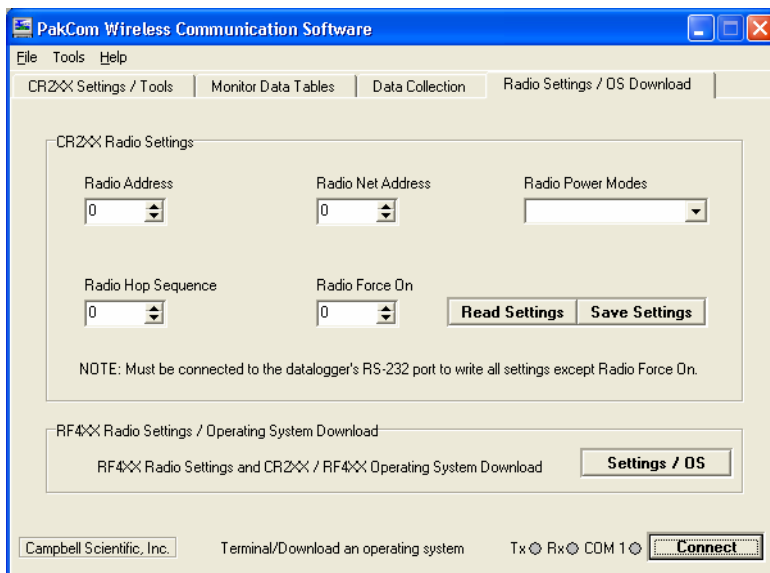


Figure 2 Radio Settings / OS Download tab.

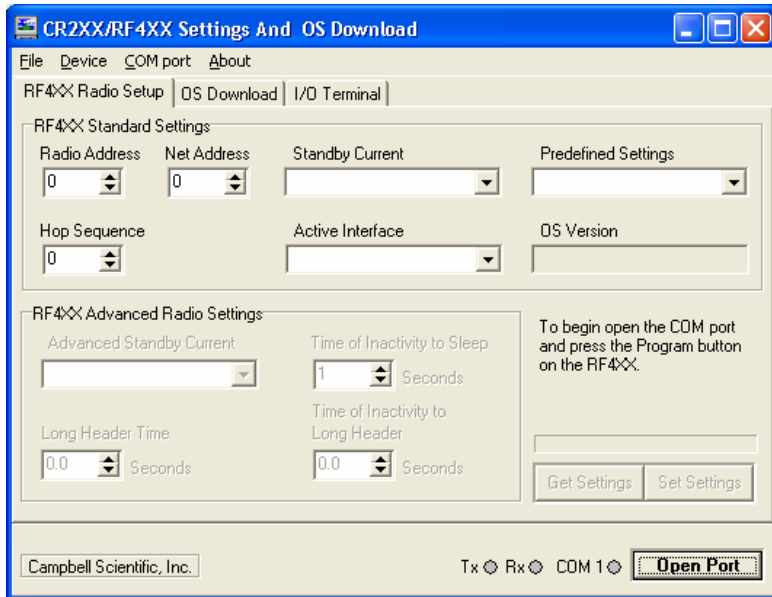


Figure 3 PakOS, RF4XX Radio Setup tab.

7. Select “OS Download” tab.
8. Select “Open Port”, a green light will come on.

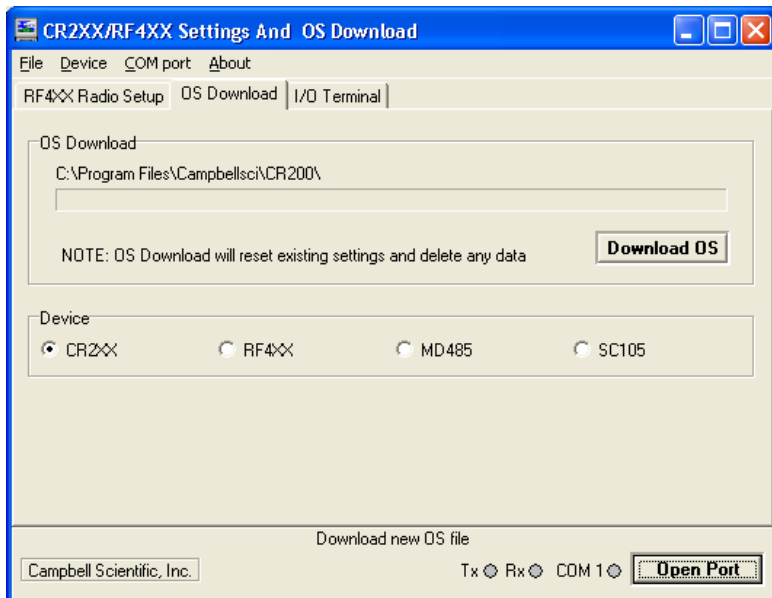


Figure 4 PakOs, OS Download tab.

9. Select “Download OS”. This will open a window that will allow you to find the file you want to download on your computer. The file will be a *.a43 file. After you have selected it, select “Open”.
10. A confirm window will appear, see Figure 5. Power down the datalogger, select “OK” and then power up the datalogger. If you have not applied power within 8 seconds of selecting “OK” the program will time out and will need to go back to Step 9.

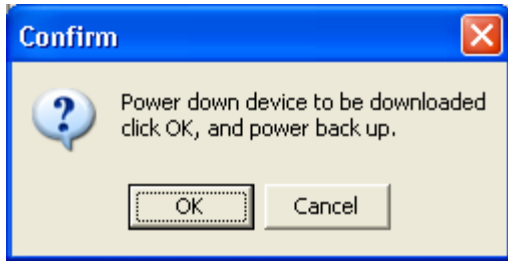


Figure 5 Confirm Popup, Power Down Logger.

11. The download progress can be followed by the blue segments in Figure 6.

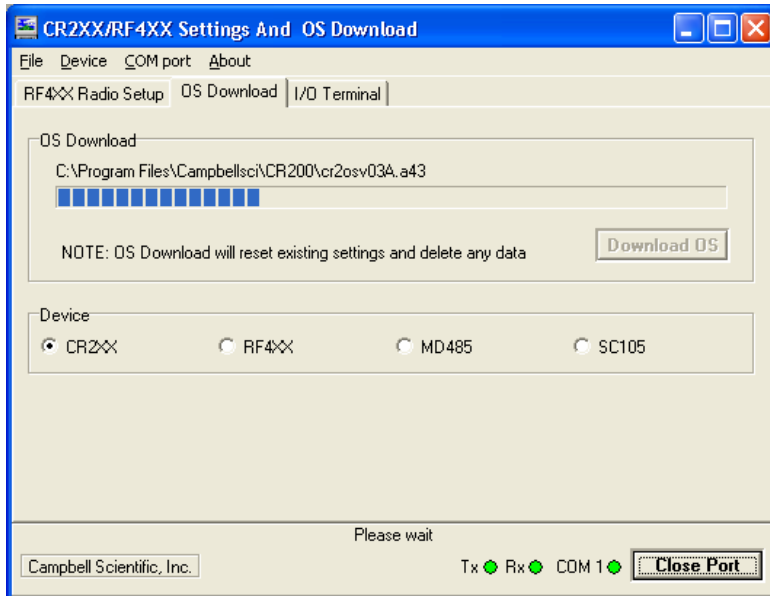


Figure 6 Download Progress.

11. When the download is finished an information window will appear stating that the Download is complete.
12. Select “Close Port”.
13. Close PakOS by selecting the “X” button.
14. Back in PakCom, go to the “CR2XX Settings / Tools” tab.
15. Select “Read Address”. You are now connected to the logger. The logger has factory defaults for all of it’s settings which you may want to change.
16. You can verify what OS is in the logger by selecting “Tools” then “Logger Status”.

OS Download is completed.